

FITFLEET-EXCAVATOR-250HR-CVA

PM Checklist

● 0 ● 0 ● 95 ● 10

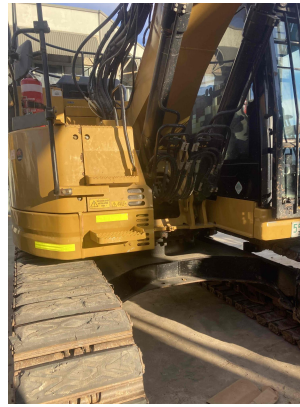
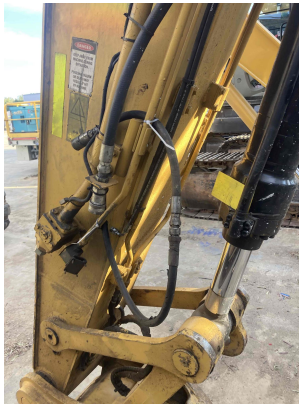
Inspection Number	18928724	Customer No	2969824372
Serial Number	NDJ20530	Customer Name	AUSTRALIAN HAMMER SUPPLIES HIRE PTY LTD
Make	CATERPILLAR	Customer Email	hirebookings2@hammerhire.com.au
Model	325	Work Order	SC71992
Equipment Family	Medium Hydraulic Excavator	Completed On	6/09/2024 4:21:22 PM
Asset ID	AHSH63	Inspector	Collin Graham
SMU	4669.94 Hours	PDF Generated On	6/09/2024
Location	23 Kingsway, Cronulla, New South Wales 2230, Australia	Coordinates	0, 0, 0
Technician			

General Info & Comments

● **General info/Comments** NORMAL

Comments: Hitch secondary flap getting jammed up. Cleaned burrs from hitch and cycle multiple times to get operational again. Still marginally sticky but will improve with more cycle operations





TASK SAFETY INSTRUCTIONS - Revision Number: 02 Date: 25th September 2023

- **1.1 Wear Correct PPE at all times** *PASS*

- **1.2 All isolation and safe work procedures must be followed** *PASS*

- **1.3 Identify task hazards and controls utilising hierarchy or controls model** *PASS*

- **1.4 Ensure a competent operator and spotter is utilised to move mobile equipment** *PASS*

- **1.5 Ensure all mobile equipment is fundamentally stable** *PASS*

- **1.6 Ensure three points of contact is maintained during access and egress** *PASS*

- **1.7 Ensure acceptable housekeeping standards are maintained at all times** *PASS*

MACHINE GENERAL RUNNING CHECKS

- **2.1 Check all work lights, beacon & reverse alarm for operation** *PASS*

●	2.2 Test all dash warning lights, gauges and audible alarms for correct operation	PASS
●	2.3 Check idle timer for correct shut down operation	PASS
●	2.4 Check operation of all three emergency stop buttons	PASS
●	2.5 Check operation of horn	PASS
●	2.6 Check operation of reverse camera	PASS
●	2.7 Check alternator charge voltage - ACTUAL_____V	PASS
●	2.8 Check operation of auto grease system by manually activating timer	N/A
●	2.9 Check fire system control panel for 'Normal'	N/A
●	2.10 Test hydraulic lock out function operation	PASS
●	2.11 Check window wiper and washer operation	PASS

PM SAFETY GENERAL INSPECTION

●	3.1 Visually ensure all guards, shields and covers are in place and in good condition to ensure personal are protected from rotating parts	PASS
●	3.2 Check condition of machine identification signage	PASS
●	3.3 Inspect ROPS/FOPS condition	PASS

PM BRAKING SYSTEM

●	4.1 Test travel brakes – Ensure the machine comes to a stop when travel controls are released	PASS
●	4.2 Test travel brakes – Ensure the brakes hold on a suitable slope	PASS

PM FIRE SUPPRESSION SYSTEM

● 5.1 Ensure fire suppression bottle and components are securely mounted and in good condition	N/A
● 5.2 Ensure fire suppression is correctly charged	N/A
● 5.3 Inspect last charge date - ACTUAL _____	N/A
● 5.4 Check all fire extinguishers are securely mounted and in good condition	PASS
● 5.5 Check all fire extinguishers are correctly charged	PASS
● 5.6 Inspect last charge date - ACTUAL _____	PASS

PM ENGINE

● 6.1 Perform engine valve set	N/A
● 6.2 Inspect air intake system hoses, pipes, clamps for signs of dirt ingress	PASS
● 6.3 Inspect engine for oil or fuel leaks	PASS
● 6.4 Inspect engine components for missing clamps	PASS
● 6.5 Inspect exhaust system for signs of leaks, loose bolts or missing clamps	PASS
● 6.6 Inspect turbo for security and signs of leaks	PASS
● 6.7 Inspect condition of exhaust lagging	PASS
● 6.8 Inspect engine mounts for condition and loose hardware	PASS
● 6.9 Inspect alternator mount condition and adjustment	PASS
● 6.10 Inspect wiring condition and security	PASS
● 6.11 Inspect engine belts	PASS

PM ENGINE COOLING SYSTEM

- | | |
|--|------|
| ● 7.1 Check coolant level | PASS |
| ● 7.2 Check condition of radiator cap | PASS |
| ● 7.3 Check condition of radiator core | PASS |
| ● 7.4 Check cooling system for signs of leaks | PASS |
| ● 7.5 Check hose and clamp condition | PASS |
| ● 7.6 Inspect fan condition and operation | PASS |
| ● 7.7 Inspect radiator and fan guard condition | PASS |

PM SWING TRANSMISSION

- | | |
|---|------|
| ● 8.1 Inspect swing transmission for signs of leaks | PASS |
| ● 8.2 Inspect swing transmission oil level | PASS |

PM HYDRAULIC SYSTEM

- | | |
|---|------|
| ● 9.1 Check hydraulic oil level | PASS |
| ● 9.2 Inspect hydraulic cylinders for leaks and security | PASS |
| ● 9.3 Inspect hydraulic hoses for leaks, damage, security | PASS |
| ● 9.4 Inspect hydraulic pump condition, leaks, security | PASS |
| ● 9.5 Check Pilot Accumulator operation as per OEM Maintenance Procedure - Test Boom Down Functionality with engine off | PASS |

PM FINAL DRIVES

- 10.1 Inspect LHS final drive mount condition for leaks and security PASS

- 10.2 Inspect LHS oil level and mag plug condition PASS

- 10.3 Inspect RHS final drive mount condition for leaks and security PASS

- 10.4 Inspect RHS oil level and mag plug condition PASS

PM UNDERCARRIAGE

- 11.1 Inspect LHS track tension PASS

- 11.2 Inspect RHS track tension PASS

- 11.3 Inspect tracks for loose/missing bolts PASS

- 11.4 Inspect load and carrier rollers for signs of leaks PASS

- 11.5 Inspect idlers for signs of leaks PASS

- 11.6 Inspect sprocket segments condition PASS

- 11.7 Inspect track frame for cracks, lose or missing hardware PASS

PM FRAME AND BODY

- 12.1 Check panels for damage and security PASS

- 12.2 Check access steps and walkway condition PASS

- 12.3 Inspect boom condition – cracks, missing clamps, damaged pipes, excessive movement, lubrication PASS

- 12.4 Inspect stick condition – cracks, missing clamps, damaged pipes, excessive movement, lubrication PASS

- 12.5 Inspect quick hitch condition and operation PASS

● 12.6 Inspect bucket condition – cracks, wear, damage, mounts *PASS*

● 12.7 Inspect GET condition and hardware *PASS*

PM ELECTRICAL SYSTEM

● 13.1 Check battery condition *PASS*

● 13.2 Check battery terminal condition *PASS*

● 13.3 Check battery security *PASS*

● 13.4 Check battery box drain is clear *PASS*

● 13.5 Check wiring condition and security *PASS*

PM GREASE SYSTEM

● 14.1 Check all points for acceptable lubrication *PASS*

● 14.2 Inspect grease system operation *N/A*

● 14.3 Check grease line condition *PASS*

● 14.4 Refill grease tank *N/A*

● 14.5 Lubricate bucket linkage *PASS*

● 14.6 Lubricate blade linkage *PASS*

● 14.7 Lubricate boom & stick linkage *PASS*

● 14.8 Lubricate swing bearing *PASS*

PM OPERATOR STATION

●	15.1 Check all doors for correct opening and closing adjustments and operation	PASS
●	15.2 Inspect condition of door seals	PASS
●	15.3 Check window glass and seal condition	PASS
●	15.4 Check mirror condition and adjustments	PASS
●	15.5 Fill window washer reservoir	PASS
●	15.6 Inspect air con vents condition	PASS
●	15.7 Inspect seat belt and mounting hardware	PASS
●	15.8 Inspect seat condition, operation and mounting	PASS
●	15.9 Replace cabin A/C filter	N/A

OIL SAMPLING

●	16.1 Engine	PASS
---	-------------	------

PM POST SERVICE INSPECTION CHECKS

●	17.1 All inspections have been completed and rectified as required	PASS
●	17.2 All safety related defects have been repaired or reported	PASS
●	17.3 All defects have been noted and reported	PASS
●	17.4 All fluids are at correct level and drain plugs tight	PASS
●	17.5 All oil samples have visually been inspected and any notable signs of contamination have been reported	PASS
●	17.6 All replaced filters have been cut and inspected and photos added to CAT Inspect and reported to supervisor	N/A

● 17.7 Machine has been recommissioned and ready for operation PASS

● 17.8 PM service notification marked off in Vision Link COMPLETED

DEFECTS IDENTIFIED

● 18.1 DEFECTS IDENTIFIED PASS
