

PM 4 PERFORM (2000 HOURS INTERVAL)

PM Checklist

● 0 ● 0 ● 29 ● 0

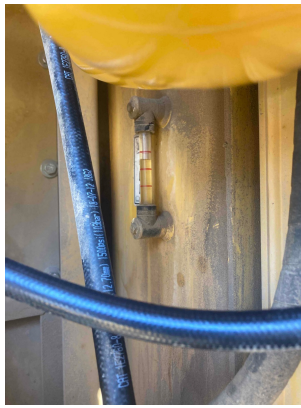
Inspection Number	14731806	Customer Name	AHSH
Serial Number	NDJ20530	Customer Email	hirebookings2@hammerhire.com.au
Make	CATERPILLAR	Work Order	SC67365
Model	325F	Completed On	23/10/2023 2:35:51 PM
Equipment Family	EXCAVATORS	Inspector	Collin Graham
Asset ID	AHSH63	PDF Generated On	23/10/2023
SMU	3991 Hours	Location	79 Williamson Rd, Ingleburn, NSW
Coordinates	29.2625846862793, -33.9899748501791, 150.858699679984		
Technician			

General Info & Comments

● General info/Comments

NORMAL





PM 4 PERFORM (2000 HOURS INTERVAL)

● **1.1 TAKE & ANALYZE SOS SAMPLE FROM ENGINE OIL** *NORMAL*

Job : 008
Modifier :
Quantity :
WorkApp :
JobLocation :
JobCond :
CabType :
Part Number : SOS
Part Quantity : 1.0

● **1.2 TAKE & ANALYZE SOS SAMPLE FROM FINAL DRIVE OIL** *NORMAL*

Job : 008

Job : 000
Modifier :
Quantity :
WorkApp :
JobLocation :
JobCond :
CabType :
Part Number : SOS
Part Quantity : 2.0

● **1.3 LUBRICATE SWING GEAR/BEARING BEARING** *NORMAL*

Job : 086
Modifier :
Quantity :
WorkApp :
JobLocation :
JobCond :
CabType :

● **1.4 CLEAN REFRIGERANT CONDENSER** *NORMAL*

Job : 070
Modifier :
Quantity :
WorkApp :
JobLocation :
JobCond :
CabType :

● **1.5 CHECK FINAL DRIVE FLUID LEVEL** *NORMAL*

Job : 535
Modifier :
Quantity :
WorkApp :
JobLocation :
JobCond :
CabType :

● **1.6 CHECK SWING DRIVE FLUID LEVEL** *NORMAL*

Job : 535
Modifier :
Quantity :
WorkApp :
JobLocation :
JobCond :
CabType :

● **1.7 TAKE & ANALYZE SOS SAMPLE FROM HYDRAULIC OIL**

NORMAL

Job : 008
Modifier :
Quantity :
WorkApp :
JobLocation :
JobCond :
CabType :
Part Number : SOS
Part Quantity : 1.0

● **1.8 TAKE & ANALYZE SOS SAMPLE FROM SWING DRIVE OIL**

NORMAL

Job : 008
Modifier :
Quantity :
WorkApp :
JobLocation :
JobCond :
CabType :
Part Number : SOS
Part Quantity : 1.0

● **1.9 INSPECT SERPENTINE BELT**

NORMAL

Job : 040
Modifier :
Quantity :
WorkApp :
JobLocation :
JobCond :
CabType :
Part Number : 2985876
Part Quantity : 1.0

● **1.10 LUBRICATE BOOM LINKAGE**

NORMAL

Job : 086
Modifier :
Quantity :
WorkApp :
JobLocation :
JobCond :
CabType :
Part Number : 5P0960
Part Quantity : 0.2641721769

● **1.11 LUBRICATE STICK LINKAGE**

NORMAL

Job : 086
Modifier :
Quantity :
WorkApp :
JobLocation :
JobCond :
CabType :
Part Number : 5P0960
Part Quantity : 0.2641721769

● **1.12 REPLACE WITH NEW ENGINE OIL & FILTER**

NORMAL

Job : 511
Modifier :
Quantity :
WorkApp :
JobLocation :
JobCond :
CabType :
Part Number : DEO-ULS
Part Quantity : 4.2267548297

● **1.13 REPLACE WITH NEW WATER SEPARATOR ELEMENT**

NORMAL

Job : 511
Modifier :
Quantity :
WorkApp :
JobLocation :
JobCond :
CabType :
Part Number : 4794131
Part Quantity : 1.0

● **1.14 REPLACE WITH NEW SECONDARY FUEL FILTER ELEMENT**

NORMAL

Job : 511
Modifier :
Quantity :
WorkApp :
JobLocation :
JobCond :
CabType :
Part Number : 3608960
Part Quantity : 1.0

● **1.15 CLEAN FUEL TANK STRAINER**

NORMAL

Job : 070

Modifier :
Quantity :
WorkApp :
JobLocation :
JobCond :
CabType :

● **1.16 CLEAN BATTERY**

NORMAL

Job : 070
Modifier :
Quantity :
WorkApp :
JobLocation :
JobCond :
CabType :

● **1.17 TIGHTEN/TORQUE BATTERY BOX/SUPPORT**

NORMAL

Job : 527
Modifier :
Quantity :
WorkApp :
JobLocation :
JobCond :
CabType :

● **1.18 REPLACE WITH NEW FUEL TANK CAP(S)**

NORMAL

Job : 511
Modifier :
Quantity :
WorkApp :
JobLocation :
JobCond :
CabType :
Part Number : 3507735
Part Quantity : 1.0

● **1.19 REPLACE WITH NEW CASE DRAIN OIL FILTER ELEMENT**

NORMAL

Job : 511
Modifier :
Quantity :
WorkApp :
JobLocation :
JobCond :
CabType :
Part Number : 0937521
Part Quantity : 1.0

● **1.20 REPLACE WITH NEW HYDRAULIC OIL FILTER PILOT** *NORMAL*

Job : 511
Modifier :
Quantity :
WorkApp :
JobLocation :
JobCond :
CabType :
Part Number : 5I8670
Part Quantity : 1.0

● **1.21 INSPECT ROPS/FOPS CAB** *NORMAL*

Job : 040
Modifier :
Quantity :
WorkApp :
JobLocation :
JobCond :
CabType :

● **1.22 DRAIN / REFILL SWING DRIVE OIL** *NORMAL*

Job : 044
Modifier :
Quantity :
WorkApp :
JobLocation :
JobCond :
CabType :
Part Number : TDTO
Part Quantity : 2.1133774149

● **1.23 DRAIN / REFILL FINAL DRIVE OIL** *NORMAL*

Job : 044
Modifier :
Quantity :
WorkApp :
JobLocation :
JobCond :
CabType :
Part Number : TDTO
Part Quantity : 4.2267548297

● **1.24 REPLACE WITH NEW HYDRAULIC OIL FILTER RETURN** *NORMAL*

Job : 511
Modifier :
Quantity :
WorkApp :
JobLocation :
JobCond :
CabType :
Part Number : 1799806
Part Quantity : 1.0

● **1.25 REPLACE WITH NEW AIR CONDITIONER RECEIVER/DRYER** *NORMAL*

Job : 511
Modifier :
Quantity :
WorkApp :
JobLocation :
JobCond :
CabType :
Part Number : 3276558
Part Quantity : 1.0

● **1.26 LUBRICATE SWING GEAR/BEARING GEAR** *NORMAL*

Job : 086
Modifier :
Quantity :
WorkApp :
JobLocation :
JobCond :
CabType :

● **1.27 TAKE & ANALYZE SOS SAMPLE FROM ENGINE COOLANT LEVEL 2** *NORMAL*

Job : 008
Modifier :
Quantity :
WorkApp :
JobLocation :
JobCond :
CabType :
Part Number : SOS COOL-2
Part Quantity : 1.0

● **1.28 PERFORM PM 4** *NORMAL*

Job : 540
Modifier :
Quantity :

WorkApp :
JobLocation :
JobCond :
CabType :
