

FITFLEET-EXCAVATOR-2000HR-CVA

PM Checklist

● 4 ● 0 ● 112 ● 14

| | | | |
|-------------------|---|------------------|---|
| Inspection Number | 17978696 | Customer No | 2969824372 |
| Serial Number | KEF10406 | Customer Name | AUSTRALIAN HAMMER SUPPLIES HIRE PTY LTD |
| Make | CATERPILLAR | Customer Email | hirebookings2@hammer hire.com.au |
| Model | 345 GC | Work Order | SD43439 |
| Equipment Family | Large Hydraulic Excavator | Completed On | 1/07/2024 6:52:06 AM |
| Asset ID | AHSH104 | Inspector | Yoon Venaglia |
| SMU | 4012 Hours | PDF Generated On | 30/06/2024 |
| Location | Croom, Australia 2527 | Coordinates | 0, 0, 0 |
| Technician |  | | |

General Info & Comments

● General info/Comments NORMAL

TASK SAFETY INSTRUCTIONS - Revision Number: 02 Date: 25th September 2023

- 1.1 Wear Correct PPE at all times PASS
- 1.2 All isolation and safe work procedures must be followed PASS
- 1.3 Identify task hazards and controls utilising hierarchy or controls model PASS
- 1.4 Ensure a competent operator and spotter is utilised to move mobile equipment PASS
- 1.5 Ensure all mobile equipment is fundamentally stable PASS
- 1.6 Ensure three points of contact is maintained during access and egress PASS
- 1.7 Ensure acceptable housekeeping standards are maintained at all times PASS

MACHINE GENERAL RUNNING CHECKS

- 2.1 Check all work lights, beacon & reverse alarm for operation PASS
- 2.2 Test all dash warning lights, gauges and audible alarms for correct operation PASS
- 2.3 Check idle timer for correct shut down operation PASS
- 2.4 Check operation of all three emergency stop buttons PASS
- 2.5 Check operation of horn FAIL

Comments: Horn working but button broken



- 2.6 Check operation of reverse camera PASS
- 2.7 Check alternator charge voltage - ACTUAL_____V PASS
- 2.8 Check operation of auto grease system by manually activating timer N/A
- 2.9 Check fire system control panel for 'Normal' N/A
- 2.10 Test hydraulic lock out function operation PASS
- 2.11 Check window wiper and washer operation PASS

PM SAFETY GENERAL INSPECTION

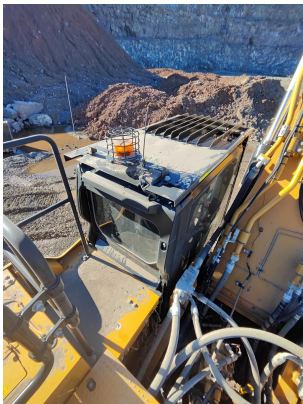
- 3.1 Visually ensure all guards, shields and covers are in place and in good condition to ensure personal are protected from rotating parts PASS

● 3.2 Check condition of machine identification signage

PASS

● 3.3 Inspect ROPS/FOPS condition

PASS



PM BRAKING SYSTEM

● 4.1 Test travel brakes – Ensure the machine comes to a stop when travel controls are released

PASS

● 4.2 Test travel brakes – Ensure the brakes hold on a suitable slope

PASS

PM FIRE SUPPRESSION SYSTEM

● 5.1 Ensure fire suppression bottle and components are securely mounted and in good condition

N/A

● 5.2 Ensure fire suppression is correctly charged

N/A

● 5.3 Inspect last charge date - ACTUAL _____

N/A

● 5.4 Check all fire extinguishers are securely mounted and in good condition

PASS





● 5.5 Check all fire extinguishers are correctly charged PASS

● 5.6 Inspect last charge date - ACTUAL _____ PASS

PM ENGINE

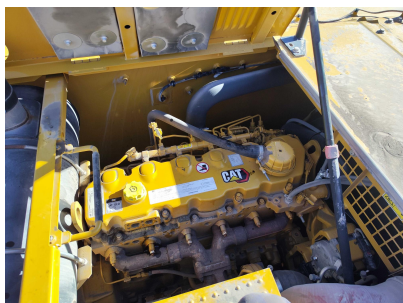
● 6.1 Perform engine valve set N/A

● 6.2 Inspect air intake system hoses, pipes, clamps for signs of dirt ingress PASS

Comments: Minor dust behind 2nd filter. Cleaned out monitor for future



● 6.3 Inspect engine for oil or fuel leaks PASS



● 6.4 Inspect engine components for missing clamps PASS

| | | |
|---|--|------|
| ● | 6.5 Inspect exhaust system for signs of leaks, loose bolts or missing clamps | PASS |
|---|--|------|

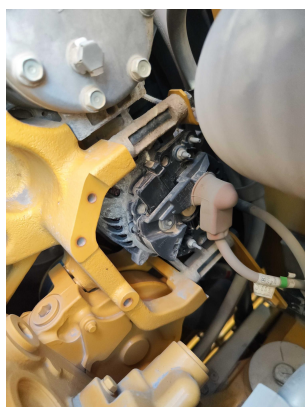


| | | |
|---|---|------|
| ● | 6.6 Inspect turbo for security and signs of leaks | PASS |
|---|---|------|

| | | |
|---|--|-----|
| ● | 6.7 Inspect condition of exhaust lagging | N/A |
|---|--|-----|

| | | |
|---|--|------|
| ● | 6.8 Inspect engine mounts for condition and loose hardware | PASS |
|---|--|------|

| | | |
|---|---|------|
| ● | 6.9 Inspect alternator mount condition and adjustment | PASS |
|---|---|------|

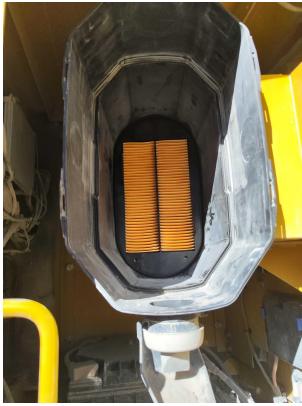


| | | |
|---|--|------|
| ● | 6.10 Inspect wiring condition and security | PASS |
|---|--|------|

| | | |
|---|----------------------------|------|
| ● | 6.11 Clean engine breather | PASS |
|---|----------------------------|------|

| | | |
|---|-------------------------------|------|
| ● | 6.12 Replace outer air filter | PASS |
|---|-------------------------------|------|

| | | |
|---|-------------------------------|------|
| ● | 6.13 Replace inner air filter | PASS |
|---|-------------------------------|------|



-
- | | | |
|--|---|---|
| <div data-bbox="102 512 138 554"><div></div></div> | <div data-bbox="162 512 652 554">6.14 Replace/Check/Adjust engine belts</div> | <div data-bbox="1364 512 1456 554">PASS</div> |
|--|---|---|



-
- | | | |
|--|--|--|
| <div data-bbox="102 1029 138 1073"><div></div></div> | <div data-bbox="162 1029 548 1073">6.15 Carry out engine valve set</div> | <div data-bbox="1388 1029 1456 1073">N/A</div> |
|--|--|--|

PM ENGINE COOLING SYSTEM

- | | | |
|--|--|---|
| <div data-bbox="102 1201 138 1243"><div></div></div> | <div data-bbox="162 1201 456 1243">7.1 Check coolant level</div> | <div data-bbox="1360 1201 1456 1243">PASS</div> |
|--|--|---|



-
- | | | |
|--|--|---|
| <div data-bbox="102 1717 138 1759"><div></div></div> | <div data-bbox="162 1717 597 1759">7.2 Check condition of radiator cap</div> | <div data-bbox="1360 1717 1456 1759">PASS</div> |
|--|--|---|

-
- | | | |
|--|--|---|
| <div data-bbox="102 1824 138 1871"><div></div></div> | <div data-bbox="162 1824 774 1871">7.3 Check condition of radiator core and blow out</div> | <div data-bbox="1360 1824 1456 1871">PASS</div> |
|--|--|---|



- 7.4 Check cooling system for signs of leaks PASS
- 7.5 Check hose and clamp condition PASS
- 7.6 Inspect fan condition and operation PASS
- 7.7 Inspect radiator and fan guard condition PASS

PM SWING TRANSMISSION

- 8.1 Inspect swing transmission for signs of leaks PASS

Comments: Large buildup of dirt and dust. Had to dig out to access swing drain valve



- 8.2 Inspect swing transmission oil level PASS

PM HYDRAULIC SYSTEM

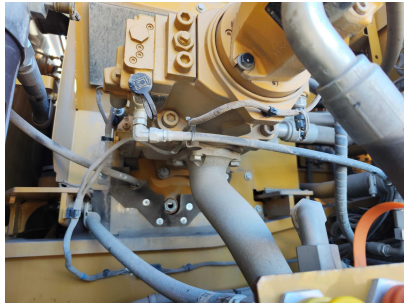
- 9.1 Check hydraulic oil level PASS

9.2 Inspect hydraulic cylinders for leaks and security

- 9.3 Inspect hydraulic hoses for leaks, damage, security PASS



- 9.4 Inspect hydraulic pump condition, leaks, security PASS



- 9.5 Check Pilot Accumulator operation as per OEM Maintenance Procedure - Test Boom Down Functionality with engine off PASS

PM FINAL DRIVES

- 10.1 Inspect LHS final drive mount condition for leaks and security PASS



- 10.2 Inspect LHS oil level and mag plug condition PASS

- 10.3 Inspect RHS final drive mount condition for leaks and security PASS

- 10.4 Inspect RHS oil level and mag plug condition PASS



PM UNDERCARRIAGE

- **11.1 Inspect LHS track tension** *FAIL*

Comments: Too tight, had to loosen. Okay after adjustment

- **11.2 Inspect RHS track tension** *FAIL*

Comments: Too tight had to loosen. Okay after adjustment

- **11.3 Inspect tracks for loose/missing bolts** *PASS*

- **11.4 Inspect load and carrier rollers for signs of leaks** *PASS*

- **11.5 Inspect idlers for signs of leaks** *PASS*

- **11.6 Inspect sprocket segments condition** *PASS*

- **11.7 Inspect track frame for cracks, lose or missing hardware** *PASS*

PM FRAME AND BODY

- **12.1 Check panels for damage and security** *PASS*

- **12.2 Check access steps and walkway condition** *PASS*

- **12.3 Inspect boom condition – cracks, missing clamps, damaged pipes, excessive movement, lubrication** *PASS*



- **12.4 Inspect stick condition – cracks, missing clamps, damaged pipes, excessive movement, lubrication** PASS



- **12.5 Inspect quick hitch condition and operation** PASS

Comments: Was getting stuck, greased and worked free. Okay

- **12.6 Inspect bucket condition – cracks, wear, damage, mounts** PASS

- **12.7 Inspect GET condition and hardware** PASS



PM ELECTRICAL SYSTEM

- **13.1 Check battery condition** PASS

| | | |
|---|--|------|
| ● | 13.2 Check battery terminal condition | PASS |
| ● | 13.3 Check battery security | PASS |
| ● | 13.4 Check battery box drain is clear | PASS |
| ● | 13.5 Check wiring condition and security | PASS |

PM GREASE SYSTEM

| | | |
|---|--|------|
| ● | 14.1 Check all points for acceptable lubrication | PASS |
| ● | 14.2 Inspect grease system operation | N/A |
| ● | 14.3 Check grease line condition | N/A |
| ● | 14.4 Refill grease tank | N/A |
| ● | 14.5 Lubricate bucket linkage | PASS |
| ● | 14.6 Lubricate blade linkage | PASS |
| ● | 14.7 Lubricate boom & stick linkage | PASS |
| ● | 14.8 Lubricate swing gear | PASS |
| ● | 14.9 Lubricate swing bearing | PASS |

PM OPERATOR STATION

| | | |
|---|--|------|
| ● | 15.1 Check all doors for correct opening and closing adjustments and operation | PASS |
| ● | 15.2 Inspect condition of door seals | PASS |
| ● | 15.3 Check window glass and seal condition | PASS |

| | | |
|---|---|------|
| ● | 15.4 Check mirror condition and adjustments | PASS |
| ● | 15.5 Fill window washer reservoir | N/A |
| ● | 15.6 Inspect air con vents condition | PASS |
| ● | 15.7 Inspect seat belt and mounting hardware | PASS |
| ● | 15.8 Inspect seat condition, operation and mounting | PASS |



| | | |
|---|-------------------------------|------|
| ● | 15.9 Replace cabin A/C filter | PASS |
|---|-------------------------------|------|



OIL SAMPLING

| | | |
|---|-----------------------|------|
| ● | 16.1 Engine | PASS |
| ● | 16.2 Hydraulic System | PASS |
| ● | 16.3 LHS Final Drive | PASS |

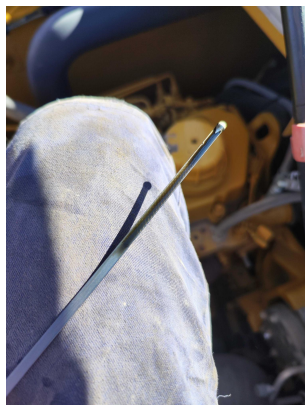
● 16.4 RHS Final Drive PASS

● 16.5 Swing Transmission PASS

● 16.6 Coolant PASS

OIL AND FILTERS

● 17.1 Replace engine oil PASS



● 17.2 Replace engine oil filter PASS



● 17.3 Replace primary fuel filter (water separator) element PASS



| | | |
|---|---|------|
| ● | 17.4 Replace secondary fuel filter | PASS |
| ● | 17.5 Replace fuel system third filter | N/A |
| ● | 17.6 Replace outer air filter | PASS |
| ● | 17.7 Replace inner air filter | PASS |
| ● | 17.8 Replace cab filter | PASS |
| ● | 17.9 Replace A/C filter | PASS |
| ● | 17.10 Replace hydraulic case drain filter | PASS |
| ● | 17.11 Replace hydraulic pilot filter | PASS |
| ● | 17.12 Replace hammer filter | PASS |
| ● | 17.13 Replace hydraulic oil (4000Hr) | PASS |
| ● | 17.14 Replace swing transmission oil | PASS |
| ● | 17.15 Replace final drive oil | PASS |
| ● | 17.16 Replace hydraulic return filter | PASS |

| | | |
|---|-------------------------------------|-----|
| ● | 17.17 Replace Fumes disposal filter | N/A |
|---|-------------------------------------|-----|

| | | |
|-----------------------------------|--|--|
| PM POST SERVICE INSPECTION CHECKS | | |
|-----------------------------------|--|--|

| | | |
|---|--|------|
| ● | 18.1 All inspections have been completed and rectified as required | PASS |
|---|--|------|

| | | |
|---|--|------|
| ● | 18.2 All safety related defects have been repaired or reported | PASS |
|---|--|------|

| | | |
|---|---|------|
| ● | 18.3 All defects have been noted and reported | PASS |
|---|---|------|

| | | |
|---|--|------|
| ● | 18.4 All fluids are at correct level and drain plugs tight | PASS |
|---|--|------|

| | | |
|---|--|--|
| 18.5 All oil samples have visually been inspected and any notable signs of contamination have been reported | | |
|---|--|--|

| | | |
|---|--|------|
| ● | 18.6 All replaced filters have been cut and inspected and photos added to CAT Inspect and reported to supervisor | PASS |
|---|--|------|

| | | |
|---|--|------|
| ● | 18.7 Machine has been recommissioned and ready for operation | PASS |
|---|--|------|

| | | |
|---|--|-----------|
| ● | 18.8 PM service notification marked off in Vision Link | COMPLETED |
|---|--|-----------|

| | | |
|--------------------|--|--|
| DEFECTS IDENTIFIED | | |
|--------------------|--|--|

| | | |
|---|-------------------------|------|
| ● | 19.1 DEFECTS IDENTIFIED | FAIL |
|---|-------------------------|------|

| | | |
|--|--|--|
| Comments: Horn button missing but working still. | | |
|--|--|--|