

FITFLEET-EXCAVATOR-2000HR-CVA

PM Checklist

● 0 ● 1 ● 118 ● 13

Inspection Number	17112000	Customer No	2969824372
Serial Number	FEK20359	Customer Name	AUSTRALIAN HAMMER SUPPLIES HIRE PTY LTD
Make	CATERPILLAR	Customer Email	hirebookings2@hammerhire.com.au
Model	330 GC	Work Order	sc70009
Equipment Family	Medium Hydraulic Excavator	Completed On	2/05/2024 11:40:07 AM
Asset ID	AHSH124	Inspector	Collin Graham
SMU	2010.28 Hours	PDF Generated On	2/05/2024
Location	136 Castlereagh St, Sydney, New South Wales 2000, Australia	Coordinates	0, 0, 0
Technician			

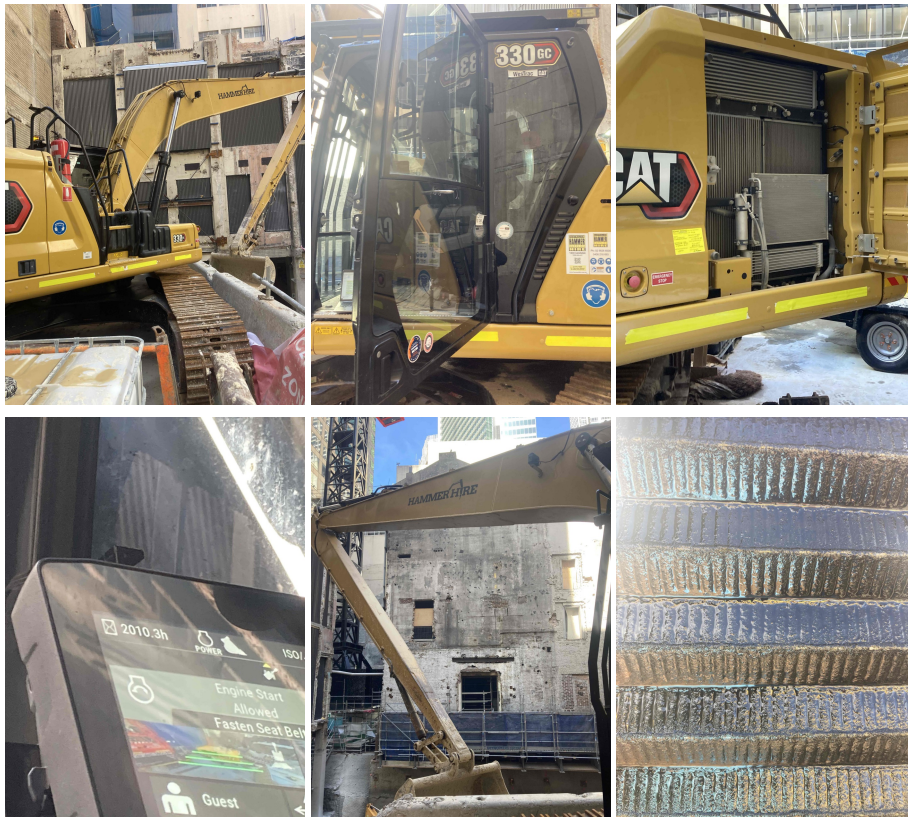
General Info & Comments

● General info/Comments

MONITOR

Comments: Radio aerial base broken at rear of cab





TASK SAFETY INSTRUCTIONS - Revision Number: 02 Date: 25th September 2023

- **1.1 Wear Correct PPE at all times** *PASS*

- **1.2 All isolation and safe work procedures must be followed** *PASS*

- **1.3 Identify task hazards and controls utilising hierarchy or controls model** *PASS*

- **1.4 Ensure a competent operator and spotter is utilised to move mobile equipment** *PASS*

- **1.5 Ensure all mobile equipment is fundamentally stable** *PASS*

- **1.6 Ensure three points of contact is maintained during access and egress** *PASS*

- **1.7 Ensure acceptable housekeeping standards are maintained at all times** *PASS*

MACHINE GENERAL RUNNING CHECKS

- **2.1 Check all work lights, beacon & reverse alarm for operation** *PASS*

●	2.2 Test all dash warning lights, gauges and audible alarms for correct operation	PASS
●	2.3 Check idle timer for correct shut down operation	PASS
●	2.4 Check operation of all three emergency stop buttons	PASS
●	2.5 Check operation of horn	PASS
●	2.6 Check operation of reverse camera	PASS
●	2.7 Check alternator charge voltage - ACTUAL_____V	PASS
●	2.8 Check operation of auto grease system by manually activating timer	N/A
●	2.9 Check fire system control panel for 'Normal'	N/A
●	2.10 Test hydraulic lock out function operation	PASS
●	2.11 Check window wiper and washer operation	PASS

PM SAFETY GENERAL INSPECTION

●	3.1 Visually ensure all guards, shields and covers are in place and in good condition to ensure personal are protected from rotating parts	PASS
●	3.2 Check condition of machine identification signage	PASS
●	3.3 Inspect ROPS/FOPS condition	PASS

PM BRAKING SYSTEM

●	4.1 Test travel brakes – Ensure the machine comes to a stop when travel controls are released	PASS
●	4.2 Test travel brakes – Ensure the brakes hold on a suitable slope	PASS

PM FIRE SUPPRESSION SYSTEM

● 5.1 Ensure fire suppression bottle and components are securely mounted and in good condition	N/A
● 5.2 Ensure fire suppression is correctly charged	N/A
● 5.3 Inspect last charge date - ACTUAL _____	N/A
● 5.4 Check all fire extinguishers are securely mounted and in good condition	PASS
● 5.5 Check all fire extinguishers are correctly charged	PASS
● 5.6 Inspect last charge date - ACTUAL _____	PASS

PM ENGINE

● 6.1 Perform engine valve set	PASS
● 6.2 Inspect air intake system hoses, pipes, clamps for signs of dirt ingress	PASS
● 6.3 Inspect engine for oil or fuel leaks	PASS
● 6.4 Inspect engine components for missing clamps	PASS
● 6.5 Inspect exhaust system for signs of leaks, loose bolts or missing clamps	PASS
● 6.6 Inspect turbo for security and signs of leaks	PASS
● 6.7 Inspect condition of exhaust lagging	PASS
● 6.8 Inspect engine mounts for condition and loose hardware	PASS
● 6.9 Inspect alternator mount condition and adjustment	PASS
● 6.10 Inspect wiring condition and security	PASS
● 6.11 Clean engine breather	PASS

-
- 6.12 Replace outer air filter PASS

 - 6.13 Replace inner air filter PASS

 - 6.14 Replace/Check/Adjust engine belts PASS

 - 6.15 Carry out engine valve set PASS

PM ENGINE COOLING SYSTEM

- 7.1 Check coolant level PASS

- 7.2 Check condition of radiator cap PASS

- 7.3 Check condition of radiator core and blow out PASS

- 7.4 Check cooling system for signs of leaks PASS

- 7.5 Check hose and clamp condition PASS

- 7.6 Inspect fan condition and operation PASS

- 7.7 Inspect radiator and fan guard condition PASS

PM SWING TRANSMISSION

- 8.1 Inspect swing transmission for signs of leaks PASS

- 8.2 Inspect swing transmission oil level PASS

PM HYDRAULIC SYSTEM

- 9.1 Check hydraulic oil level PASS

- 9.2 Inspect hydraulic cylinders for leaks and security PASS

● 9.3 Inspect hydraulic hoses for leaks, damage, security *PASS*

● 9.4 Inspect hydraulic pump condition, leaks, security *PASS*

● 9.5 Check Pilot Accumulator operation as per OEM Maintenance Procedure -
Test Boom Down Functionality with engine off *PASS*

PM FINAL DRIVES

● 10.1 Inspect LHS final drive mount condition for leaks and security *PASS*

● 10.2 Inspect LHS oil level and mag plug condition *PASS*

● 10.3 Inspect RHS final drive mount condition for leaks and security *PASS*

● 10.4 Inspect RHS oil level and mag plug condition *PASS*

PM UNDERCARRIAGE

● 11.1 Inspect LHS track tension *PASS*

● 11.2 Inspect RHS track tension *PASS*

● 11.3 Inspect tracks for loose/missing bolts *PASS*

● 11.4 Inspect load and carrier rollers for signs of leaks *PASS*

● 11.5 Inspect idlers for signs of leaks *PASS*

● 11.6 Inspect sprocket segments condition *PASS*

● 11.7 Inspect track frame for cracks, lose or missing hardware *PASS*

PM FRAME AND BODY

● 12.1 Check panels for damage and security *PASS*

●	12.2 Check access steps and walkway condition	PASS
●	12.3 Inspect boom condition – cracks, missing clamps, damaged pipes, excessive movement, lubrication	PASS
●	12.4 Inspect stick condition – cracks, missing clamps, damaged pipes, excessive movement, lubrication	PASS
●	12.5 Inspect quick hitch condition and operation	PASS
●	12.6 Inspect bucket condition – cracks, wear, damage, mounts	PASS
●	12.7 Inspect GET condition and hardware	PASS

PM ELECTRICAL SYSTEM

●	13.1 Check battery condition	PASS
●	13.2 Check battery terminal condition	PASS
●	13.3 Check battery security	PASS
●	13.4 Check battery box drain is clear	PASS
●	13.5 Check wiring condition and security	PASS

PM GREASE SYSTEM

●	14.1 Check all points for acceptable lubrication	PASS
●	14.2 Inspect grease system operation	N/A
●	14.3 Check grease line condition	PASS
●	14.4 Refill grease tank	N/A
●	14.5 Lubricate bucket linkage	PASS

-
- 14.6 Lubricate blade linkage *PASS*

 - 14.7 Lubricate boom & stick linkage *PASS*

 - 14.8 Lubricate swing gear *PASS*

 - 14.9 Lubricate swing bearing *PASS*

PM OPERATOR STATION

- 15.1 Check all doors for correct opening and closing adjustments and operation *PASS*

- 15.2 Inspect condition of door seals *PASS*

- 15.3 Check window glass and seal condition *PASS*

- 15.4 Check mirror condition and adjustments *PASS*

- 15.5 Fill window washer reservoir *PASS*

- 15.6 Inspect air con vents condition *PASS*

- 15.7 Inspect seat belt and mounting hardware *PASS*

- 15.8 Inspect seat condition, operation and mounting *PASS*

- 15.9 Replace cabin A/C filter *PASS*

OIL SAMPLING

- 16.1 Engine *PASS*

- 16.2 Hydraulic System *PASS*

- 16.3 LHS Final Drive *PASS*

●	16.4 RHS Final Drive	PASS
●	16.5 Swing Transmission	PASS
●	16.6 Coolant	PASS
OIL AND FILTERS		
●	17.1 Replace engine oil	PASS
●	17.2 Replace engine oil filter	PASS
●	17.3 Replace primary fuel filter (water separator) element	PASS
●	17.4 Replace secondary fuel filter	PASS
●	17.5 Replace fuel system third filter	N/A
●	17.6 Replace outer air filter	PASS
●	17.7 Replace inner air filter	PASS
●	17.8 Replace cab filter	PASS
●	17.9 Replace A/C filter	PASS
●	17.10 Replace hydraulic case drain filter	N/A
●	17.11 Replace hydraulic pilot filter	N/A
●	17.12 Replace hammer filter	N/A
●	17.13 Replace hydraulic oil (4000Hr)	N/A
●	17.14 Replace swing transmission oil	PASS

●	17.15 Replace final drive oil	PASS
●	17.16 Replace hydraulic return filter	PASS
●	17.17 Replace Fumes disposal filter	N/A

PM POST SERVICE INSPECTION CHECKS

●	18.1 All inspections have been completed and rectified as required	PASS
●	18.2 All safety related defects have been repaired or reported	PASS
●	18.3 All defects have been noted and reported	PASS
●	18.4 All fluids are at correct level and drain plugs tight	PASS
●	18.5 All oil samples have visually been inspected and any notable signs of contamination have been reported	PASS
●	18.6 All replaced filters have been cut and inspected and photos added to CAT Inspect and reported to supervisor	PASS
●	18.7 Machine has been recommissioned and ready for operation	PASS
●	18.8 PM service notification marked off in Vision Link	COMPLETED

DEFECTS IDENTIFIED

●	19.1 DEFECTS IDENTIFIED	PASS
---	-------------------------	------