

FITFLEET-EXCAVATOR-250HR-CVA

PM Checklist

● 0 ● 0 ● 95 ● 10

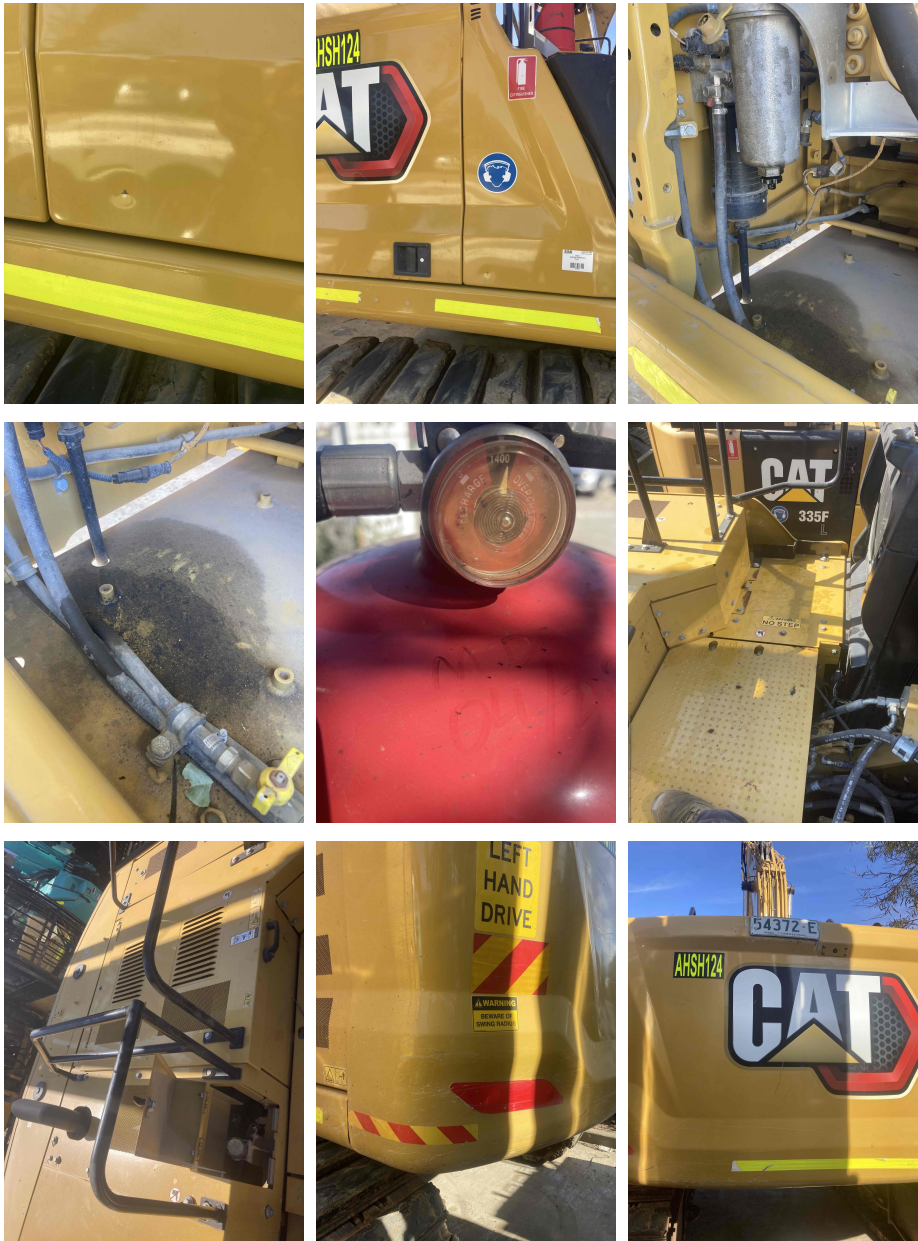
Inspection Number	18928316	Customer No	2969824372
Serial Number	FEK20359	Customer Name	AUSTRALIAN HAMMER SUPPLIES HIRE PTY LTD
Make	CATERPILLAR	Customer Email	hirebookings2@hammerhire.com.au
Model	330 GC	Work Order	SC71725
Equipment Family	Medium Hydraulic Excavator	Completed On	6/09/2024 3:58:20 PM
Asset ID	AHSH124	Inspector	Collin Graham
SMU	2261.47 Hours	PDF Generated On	6/09/2024
Location	32 Williamson Rd, Ingleburn, New South Wales 2565, Australia	Coordinates	0, 0, 0
Technician			

General Info & Comments

● **General info/Comments**

NORMAL





TASK SAFETY INSTRUCTIONS - Revision Number: 02 Date: 25th September 2023

- **1.1 Wear Correct PPE at all times** PASS

- **1.2 All isolation and safe work procedures must be followed** PASS

- **1.3 Identify task hazards and controls utilising hierarchy or controls model** PASS

- **1.4 Ensure a competent operator and spotter is utilised to move mobile equipment** PASS

- **1.5 Ensure all mobile equipment is fundamentally stable** PASS

- 1.6 Ensure three points of contact is maintained during access and egress PASS
- 1.7 Ensure acceptable housekeeping standards are maintained at all times PASS

MACHINE GENERAL RUNNING CHECKS

- 2.1 Check all work lights, beacon & reverse alarm for operation PASS
- 2.2 Test all dash warning lights, gauges and audible alarms for correct operation PASS
- 2.3 Check idle timer for correct shut down operation PASS
- 2.4 Check operation of all three emergency stop buttons PASS
- 2.5 Check operation of horn PASS
- 2.6 Check operation of reverse camera PASS
- 2.7 Check alternator charge voltage - ACTUAL_____V PASS
- 2.8 Check operation of auto grease system by manually activating timer N/A
- 2.9 Check fire system control panel for 'Normal' N/A
- 2.10 Test hydraulic lock out function operation PASS
- 2.11 Check window wiper and washer operation PASS

PM SAFETY GENERAL INSPECTION

- 3.1 Visually ensure all guards, shields and covers are in place and in good condition to ensure personal are protected from rotating parts PASS
- 3.2 Check condition of machine identification signage PASS
- 3.3 Inspect ROPS/FOPS condition PASS

PM BRAKING SYSTEM

- | | | |
|---|---|------|
| ● | 4.1 Test travel brakes – Ensure the machine comes to a stop when travel controls are released | PASS |
| ● | 4.2 Test travel brakes – Ensure the brakes hold on a suitable slope | PASS |

PM FIRE SUPPRESSION SYSTEM

- | | | |
|---|--|------|
| ● | 5.1 Ensure fire suppression bottle and components are securely mounted and in good condition | N/A |
| ● | 5.2 Ensure fire suppression is correctly charged | N/A |
| ● | 5.3 Inspect last charge date - ACTUAL _____ | PASS |
| ● | 5.4 Check all fire extinguishers are securely mounted and in good condition | PASS |
| ● | 5.5 Check all fire extinguishers are correctly charged | PASS |
| ● | 5.6 Inspect last charge date - ACTUAL _____ | PASS |

PM ENGINE

- | | | |
|---|--|------|
| ● | 6.1 Perform engine valve set | N/A |
| ● | 6.2 Inspect air intake system hoses, pipes, clamps for signs of dirt ingress | PASS |
| ● | 6.3 Inspect engine for oil or fuel leaks | PASS |
| ● | 6.4 Inspect engine components for missing clamps | PASS |
| ● | 6.5 Inspect exhaust system for signs of leaks, loose bolts or missing clamps | PASS |
| ● | 6.6 Inspect turbo for security and signs of leaks | PASS |
| ● | 6.7 Inspect condition of exhaust lagging | PASS |

-
- 6.8 Inspect engine mounts for condition and loose hardware *PASS*

 - 6.9 Inspect alternator mount condition and adjustment *PASS*

 - 6.10 Inspect wiring condition and security *PASS*

 - 6.11 Inspect engine belts *PASS*

PM ENGINE COOLING SYSTEM

- 7.1 Check coolant level *PASS*

- 7.2 Check condition of radiator cap *PASS*

- 7.3 Check condition of radiator core *PASS*

- 7.4 Check cooling system for signs of leaks *PASS*

- 7.5 Check hose and clamp condition *PASS*

- 7.6 Inspect fan condition and operation *PASS*

- 7.7 Inspect radiator and fan guard condition *PASS*

PM SWING TRANSMISSION

- 8.1 Inspect swing transmission for signs of leaks *PASS*

- 8.2 Inspect swing transmission oil level *PASS*

PM HYDRAULIC SYSTEM

- 9.1 Check hydraulic oil level *PASS*

- 9.2 Inspect hydraulic cylinders for leaks and security *PASS*

● 9.3 Inspect hydraulic hoses for leaks, damage, security *PASS*

● 9.4 Inspect hydraulic pump condition, leaks, security *PASS*

● 9.5 Check Pilot Accumulator operation as per OEM Maintenance Procedure -
Test Boom Down Functionality with engine off *PASS*

PM FINAL DRIVES

● 10.1 Inspect LHS final drive mount condition for leaks and security *PASS*

● 10.2 Inspect LHS oil level and mag plug condition *PASS*

● 10.3 Inspect RHS final drive mount condition for leaks and security *PASS*

● 10.4 Inspect RHS oil level and mag plug condition *PASS*

PM UNDERCARRIAGE

● 11.1 Inspect LHS track tension *PASS*

● 11.2 Inspect RHS track tension *PASS*

● 11.3 Inspect tracks for loose/missing bolts *PASS*

● 11.4 Inspect load and carrier rollers for signs of leaks *PASS*

● 11.5 Inspect idlers for signs of leaks *PASS*

● 11.6 Inspect sprocket segments condition *PASS*

● 11.7 Inspect track frame for cracks, lose or missing hardware *PASS*

PM FRAME AND BODY

● 12.1 Check panels for damage and security *PASS*

●	12.2 Check access steps and walkway condition	PASS
●	12.3 Inspect boom condition – cracks, missing clamps, damaged pipes, excessive movement, lubrication	PASS
●	12.4 Inspect stick condition – cracks, missing clamps, damaged pipes, excessive movement, lubrication	PASS
●	12.5 Inspect quick hitch condition and operation	PASS
●	12.6 Inspect bucket condition – cracks, wear, damage, mounts	PASS
●	12.7 Inspect GET condition and hardware	PASS

PM ELECTRICAL SYSTEM

●	13.1 Check battery condition	PASS
●	13.2 Check battery terminal condition	PASS
●	13.3 Check battery security	PASS
●	13.4 Check battery box drain is clear	PASS
●	13.5 Check wiring condition and security	PASS

PM GREASE SYSTEM

●	14.1 Check all points for acceptable lubrication	PASS
●	14.2 Inspect grease system operation	N/A
●	14.3 Check grease line condition	PASS
●	14.4 Refill grease tank	N/A
●	14.5 Lubricate bucket linkage	PASS

●	14.6 Lubricate blade linkage	N/A
●	14.7 Lubricate boom & stick linkage	PASS
●	14.8 Lubricate swing bearing	PASS

PM OPERATOR STATION

●	15.1 Check all doors for correct opening and closing adjustments and operation	PASS
●	15.2 Inspect condition of door seals	PASS
●	15.3 Check window glass and seal condition	PASS
●	15.4 Check mirror condition and adjustments	PASS
●	15.5 Fill window washer reservoir	PASS
●	15.6 Inspect air con vents condition	PASS
●	15.7 Inspect seat belt and mounting hardware	PASS
●	15.8 Inspect seat condition, operation and mounting	PASS
●	15.9 Replace cabin A/C filter	N/A

OIL SAMPLING

●	16.1 Engine	PASS
---	-------------	------

PM POST SERVICE INSPECTION CHECKS

●	17.1 All inspections have been completed and rectified as required	PASS
●	17.2 All safety related defects have been repaired or reported	PASS

- 17.3 All defects have been noted and reported *PASS*

- 17.4 All fluids are at correct level and drain plugs tight *PASS*

- 17.5 All oil samples have visually been inspected and any notable signs of contamination have been reported *PASS*

- 17.6 All replaced filters have been cut and inspected and photos added to CAT Inspect and reported to supervisor *N/A*

- 17.7 Machine has been recommissioned and ready for operation *PASS*

- 17.8 PM service notification marked off in Vision Link *COMPLETED*

DEFECTS IDENTIFIED

- 18.1 DEFECTS IDENTIFIED *PASS*