

FITFLEET-EXCAVATOR-1000HR-CVA

PM Checklist

● 8 ● 1 ● 104 ● 15

Inspection Number	18609304	Customer No	2969824372
Serial Number	JFW10542	Customer Name	AUSTRALIAN HAMMER SUPPLIES HIRE PTY LTD
Make	CATERPILLAR	Customer Email	Lachlan.Pearce@westra c.com.au
Model	336 GC	Work Order	SM31036
Equipment Family	Large Hydraulic Excavator	Completed On	15/08/2024 11:49:31 AM
Asset ID	AHSH126	Inspector	Lachlan Pearce
SMU	5021.61 Hours	PDF Generated On	15/08/2024
Location	3 Madle St, Bowenfels, New South Wales 2790, Australia	Coordinates	0, 0, 0
Technician			
Technician	JH		

General Info & Comments

● **General info/Comments** MONITOR

Comments: Hydraulic level low - out of sight glass
Exhaust manifold leak
Leaking bucket cylinder

TASK SAFETY INSTRUCTIONS - Revision Number: 02 Date: 25th September 2023

- **1.1 Wear Correct PPE at all times** PASS
- **1.2 All isolation and safe work procedures must be followed** PASS
- **1.3 Identify task hazards and controls utilising hierarchy or controls model** PASS
- **1.4 Ensure a competent operator and spotter is utilised to move mobile equipment** PASS
- **1.5 Ensure all mobile equipment is fundamentally stable** PASS

● 1.6 Ensure three points of contact is maintained during access and egress *PASS*

● 1.7 Ensure acceptable housekeeping standards are maintained at all times *PASS*

MACHINE GENERAL RUNNING CHECKS

● 2.1 Check all work lights, beacon & reverse alarm for operation *PASS*

● 2.2 Test all dash warning lights, gauges and audible alarms for correct operation *PASS*

● 2.3 Check idle timer for correct shut down operation *N/A*

● 2.4 Check operation of all three emergency stop buttons *PASS*

● 2.5 Check operation of horn *PASS*

● 2.6 Check operation of reverse camera *PASS*

● 2.7 Check alternator charge voltage - ACTUAL_____V *PASS*

Comments: 28V

● 2.8 Check operation of auto grease system by manually activating timer *N/A*

● 2.9 Check fire system control panel for 'Normal' *N/A*

● 2.10 Test hydraulic lock out function operation *PASS*

● 2.11 Check window wiper and washer operation *PASS*

PM SAFETY GENERAL INSPECTION

● 3.1 Visually ensure all guards, shields and covers are in place and in good condition to ensure personal are protected from rotating parts *PASS*

● 3.2 Check condition of machine identification signage *PASS*

● 3.3 Inspect ROPS/FOPS condition *PASS*

PM BRAKING SYSTEM

- 4.1 Test travel brakes – Ensure the machine comes to a stop when travel controls are released PASS
- 4.2 Test travel brakes – Ensure the brakes hold on a suitable slope PASS

PM FIRE SUPPRESSION SYSTEM

- 5.1 Ensure fire suppression bottle and components are securely mounted and in good condition N/A
- 5.2 Ensure fire suppression is correctly charged N/A
- 5.3 Inspect last charge date - ACTUAL _____ N/A
- 5.4 Check all fire extinguishers are securely mounted and in good condition FAIL

Comments: Bracket in cab snapped



[View Video](#)

- 5.5 Check all fire extinguishers are correctly charged FAIL

Comments: Cab extinguisher not charged in green



● 5.6 Inspect last charge date - ACTUAL _____ PASS

Comments: Feb 24

PM ENGINE

● 6.1 Perform engine valve set PASS

● 6.2 Inspect air intake system hoses, pipes, clamps for signs of dirt ingress PASS

● 6.3 Inspect engine for oil or fuel leaks PASS

● 6.4 Inspect engine components for missing clamps PASS

● 6.5 Inspect exhaust system for signs of leaks, loose bolts or missing clamps FAIL

Comments: Exhaust leak on manifold

● 6.6 Inspect turbo for security and signs of leaks PASS

● 6.7 Inspect condition of exhaust lagging N/A

● 6.8 Inspect engine mounts for condition and loose hardware PASS

● 6.9 Inspect alternator mount condition and adjustment PASS

● 6.10 Inspect wiring condition and security PASS

● 6.11 Clean engine breather PASS

● 6.12 Replace outer air filter PASS

● 6.13 Replace inner air filter PASS

● 6.14 Inspect & adjust engine belts PASS

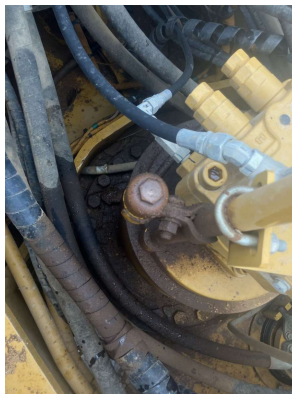
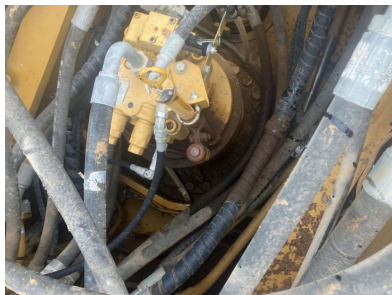
PM ENGINE COOLING SYSTEM

●	7.1 Check coolant level	PASS
●	7.2 Check condition of radiator cap	PASS
●	7.3 Check condition of radiator core and blow out	PASS
●	7.4 Check cooling system for signs of leaks	PASS
●	7.5 Check hose and clamp condition	PASS
●	7.6 Inspect fan condition and operation	PASS
●	7.7 Inspect radiator and fan guard condition	PASS

PM SWING TRANSMISSION

●	8.1 Inspect swing transmission for signs of leaks	FAIL
---	---	------

Comments: Leaking out of breather



●	8.2 Inspect swing transmission oil level	PASS
---	--	------

PM HYDRAULIC SYSTEM

●	9.1 Check hydraulic oil level	FAIL
---	-------------------------------	------

Comments: Level out of site glass

●	9.2 Inspect hydraulic cylinders for leaks and security	FAIL
---	--	------

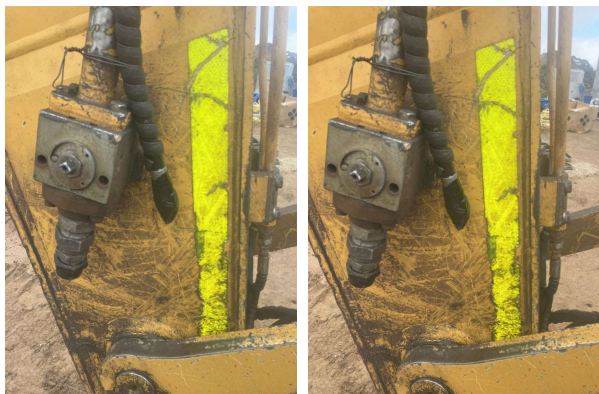
Comments: Bucket cylinder leaking



- **9.3 Inspect hydraulic hoses for leaks, damage, security**

FAIL

Comments: Auxiliary hose tapped up, fitting cap on



- **9.4 Inspect hydraulic pump condition, leaks, security**

PASS
- **9.5 Check Pilot Accumulator operation as per OEM Maintenance Procedure - Test Boom Down Functionality with engine off**

PASS

PM FINAL DRIVES

- **10.1 Inspect LHS final drive mount condition for leaks and security**

PASS

●	10.2 Inspect LHS oil level and mag plug condition	PASS
●	10.3 Inspect RHS final drive mount condition for leaks and security	PASS
●	10.4 Inspect RHS oil level and mag plug condition	PASS

PM UNDERCARRIAGE

●	11.1 Inspect LHS track tension	PASS
●	11.2 Inspect RHS track tension	PASS
●	11.3 Inspect tracks for loose/missing bolts	PASS
●	11.4 Inspect load and carrier rollers for signs of leaks	PASS
●	11.5 Inspect idlers for signs of leaks	PASS
●	11.6 Inspect sprocket segments condition	PASS
●	11.7 Inspect track frame for cracks, lose or missing hardware	PASS

PM FRAME AND BODY

●	12.1 Check panels for damage and security	PASS
●	12.2 Check access steps and walkway condition	PASS
●	12.3 Inspect boom condition – cracks, missing clamps, damaged pipes, excessive movement, lubrication	PASS
●	12.4 Inspect stick condition – cracks, missing clamps, damaged pipes, excessive movement, lubrication	PASS
●	12.5 Inspect quick hitch condition and operation	PASS
●	12.6 Inspect bucket condition – cracks, wear, damage, mounts	PASS

●	12.7 Inspect GET condition and hardware	FAIL
---	---	------



PM ELECTRICAL SYSTEM

●	13.1 Check battery condition	PASS
●	13.2 Check battery terminal condition	PASS
●	13.3 Check battery security	PASS
●	13.4 Check battery box drain is clear	PASS
●	13.5 Check wiring condition and security	PASS

PM GREASE SYSTEM

●	14.1 Check all points for acceptable lubrication	PASS
●	14.2 Inspect grease system operation	N/A
●	14.3 Check grease line condition	PASS
●	14.4 Refill grease tank	N/A
●	14.5 Lubricate bucket linkage	PASS
●	14.6 Lubricate blade linkage	N/A

●	14.7 Lubricate boom & stick linkage	PASS
---	-------------------------------------	------

●	14.8 Lubricate swing bearing	PASS
---	------------------------------	------

PM OPERATOR STATION		
---------------------	--	--

●	15.1 Check all doors for correct opening and closing adjustments and operation	PASS
---	--	------

●	15.2 Inspect condition of door seals	PASS
---	--------------------------------------	------

●	15.3 Check window glass and seal condition	PASS
---	--	------

●	15.4 Check mirror condition and adjustments	PASS
---	---	------

●	15.5 Fill window washer reservoir	PASS
---	-----------------------------------	------

●	15.6 Inspect air con vents condition	PASS
---	--------------------------------------	------

●	15.7 Inspect seat belt and mounting hardware	PASS
---	--	------

●	15.8 Inspect seat condition, operation and mounting	PASS
---	---	------

●	15.9 Replace cabin A/C filter	PASS
---	-------------------------------	------

OIL SAMPLING		
--------------	--	--

●	16.1 Engine	PASS
---	-------------	------

●	16.2 Hydraulic System	PASS
---	-----------------------	------

●	16.3 LHS Final Drive	PASS
---	----------------------	------

●	16.4 RHS Final Drive	PASS
---	----------------------	------

●	16.5 Swing Transmission	PASS
---	-------------------------	------

●	16.6 Coolant	PASS
---	--------------	------

OIL AND FILTERS		
-----------------	--	--

●	17.1 Replace engine oil	PASS
---	-------------------------	------

●	17.2 Replace engine oil filter	PASS
---	--------------------------------	------

●	17.3 Replace primary fuel filter (water separator) element	PASS
---	--	------

●	17.4 Replace secondary fuel filter	PASS
---	------------------------------------	------

●	17.5 Replace fuel system third filter	N/A
---	---------------------------------------	-----

●	17.6 Replace outer air filter	PASS
---	-------------------------------	------

●	17.7 Replace inner air filter	PASS
---	-------------------------------	------

●	17.8 Replace cab filter	PASS
---	-------------------------	------

●	17.9 Replace A/C filter	PASS
---	-------------------------	------

●	17.10 Replace hydraulic case drain filter	N/A
---	---	-----

●	17.11 Replace hydraulic pilot filter	N/A
---	--------------------------------------	-----

●	17.12 Replace hammer filter	N/A
---	-----------------------------	-----

●	17.13 Replace swing transmission oil	PASS
---	--------------------------------------	------

●	17.14 Replace final drive oil	PASS
---	-------------------------------	------

●	17.15 Replace hydraulic return filter	N/A
---	---------------------------------------	-----

PM POST SERVICE INSPECTION CHECKS		
-----------------------------------	--	--

●	18.1 All inspections have been completed and rectified as required	PASS
●	18.2 All safety related defects have been repaired or reported	PASS
●	18.3 All defects have been noted and reported	PASS
●	18.4 All fluids are at correct level and drain plugs tight	PASS
●	18.5 All oil samples have visually been inspected and any notable signs of contamination have been reported	PASS
●	18.6 All replaced filters have been cut and inspected and photos added to CAT Inspect and reported to supervisor	PASS
●	18.7 Machine has been recommissioned and ready for operation	PASS
●	18.8 PM service notification marked off in Vision Link	COMPLETED

DEFECTS IDENTIFIED

●	19.1 DEFECTS IDENTIFIED	PASS
Comments: Defects noted down on inspection		