

# FITFLEET-EXCAVATOR-1000HR-CVA

PM Checklist

● 3 ● 0 ● 112 ● 12

Inspection Number	17793463	Customer No	2969824372
Serial Number	YBN00181	Customer Name	AUSTRALIAN HAMMER SUPPLIES HIRE PTY LTD
Make	CATERPILLAR	Customer Email	hirebookings2@hammerhire.com.au
Model	336	Work Order	SM30570
Equipment Family	Large Hydraulic Excavator	Completed On	28/06/2024 7:29:13 AM
Asset ID	AHSH159	Inspector	James Wolters
SMU	7104.52 Hours	PDF Generated On	27/06/2024
Location	Panuara, Australia 2800	Coordinates	0, 0, 0
Technician			

## General Info & Comments

### General info/Comments

## TASK SAFETY INSTRUCTIONS - Revision Number: 02 Date: 25th September 2023

- 1.1 Wear Correct PPE at all times PASS
- 1.2 All isolation and safe work procedures must be followed PASS
- 1.3 Identify task hazards and controls utilising hierarchy or controls model PASS
- 1.4 Ensure a competent operator and spotter is utilised to move mobile equipment PASS
- 1.5 Ensure all mobile equipment is fundamentally stable PASS
- 1.6 Ensure three points of contact is maintained during access and egress PASS
- 1.7 Ensure acceptable housekeeping standards are maintained at all times PASS

## MACHINE GENERAL RUNNING CHECKS

● 2.1 Check all work lights, beacon & reverse alarm for operation PASS

● 2.2 Test all dash warning lights, gauges and audible alarms for correct operation PASS



● 2.3 Check idle timer for correct shut down operation N/A

● 2.4 Check operation of all three emergency stop buttons PASS

● 2.5 Check operation of horn PASS

● 2.6 Check operation of reverse camera PASS

● 2.7 Check alternator charge voltage - ACTUAL\_\_\_\_\_V PASS

Comments: 28.2 volts

● 2.8 Check operation of auto grease system by manually activating timer N/A

● 2.9 Check fire system control panel for 'Normal' PASS

● 2.10 Test hydraulic lock out function operation PASS

● 2.11 Check window wiper and washer operation PASS

**PM SAFETY GENERAL INSPECTION**

● 3.1 Visually ensure all guards, shields and covers are in place and in good condition to ensure personal are protected from rotating parts PASS

● 3.2 Check condition of machine identification signage *PASS*

● 3.3 Inspect ROPS/FOPS condition *PASS*

#### PM BRAKING SYSTEM

● 4.1 Test travel brakes – Ensure the machine comes to a stop when travel controls are released *PASS*

● 4.2 Test travel brakes – Ensure the brakes hold on a suitable slope *PASS*

#### PM FIRE SUPPRESSION SYSTEM

● 5.1 Ensure fire suppression bottle and components are securely mounted and in good condition *PASS*

● 5.2 Ensure fire suppression is correctly charged *PASS*

● 5.3 Inspect last charge date - ACTUAL \_\_\_\_\_ *PASS*

Comments: March 24

● 5.4 Check all fire extinguishers are securely mounted and in good condition *PASS*

● 5.5 Check all fire extinguishers are correctly charged *PASS*

● 5.6 Inspect last charge date - ACTUAL \_\_\_\_\_ *PASS*

Comments: Feb 24

#### PM ENGINE

● 6.1 Perform engine valve set *N/A*

● 6.2 Inspect air intake system hoses, pipes, clamps for signs of dirt ingress *PASS*

● 6.3 Inspect engine for oil or fuel leaks *PASS*

● 6.4 Inspect engine components for missing clamps *PASS*

- 6.5 Inspect exhaust system for signs of leaks, loose bolts or missing clamps PASS

---

- 6.6 Inspect turbo for security and signs of leaks PASS

---

- 6.7 Inspect condition of exhaust lagging PASS

---

- 6.8 Inspect engine mounts for condition and loose hardware PASS

---

- 6.9 Inspect alternator mount condition and adjustment PASS

---

- 6.10 Inspect wiring condition and security PASS

---

- 6.11 Clean engine breather PASS

---

- 6.12 Replace outer air filter PASS

---

- 6.13 Replace inner air filter PASS

---

- 6.14 Inspect & adjust engine belts PASS

#### PM ENGINE COOLING SYSTEM

- 7.1 Check coolant level PASS

---

- 7.2 Check condition of radiator cap PASS

---

- 7.3 Check condition of radiator core and blow out PASS

---

- 7.4 Check cooling system for signs of leaks PASS

---

- 7.5 Check hose and clamp condition PASS

---

- 7.6 Inspect fan condition and operation PASS

---

- 7.7 Inspect radiator and fan guard condition PASS

## PM SWING TRANSMISSION

- 8.1 Inspect swing transmission for signs of leaks *PASS*
- 8.2 Inspect swing transmission oil level *PASS*

## PM HYDRAULIC SYSTEM

- 9.1 Check hydraulic oil level *PASS*
- 9.2 Inspect hydraulic cylinders for leaks and security *PASS*
- 9.3 Inspect hydraulic hoses for leaks, damage, security *PASS*
- 9.4 Inspect hydraulic pump condition, leaks, security *PASS*
- 9.5 Check Pilot Accumulator operation as per OEM Maintenance Procedure - Test Boom Down Functionality with engine off *PASS*

## PM FINAL DRIVES

- 10.1 Inspect LHS final drive mount condition for leaks and security *PASS*
- 10.2 Inspect LHS oil level and mag plug condition *PASS*
- 10.3 Inspect RHS final drive mount condition for leaks and security *PASS*
- 10.4 Inspect RHS oil level and mag plug condition *PASS*

## PM UNDERCARRIAGE

- 11.1 Inspect LHS track tension *PASS*
- 11.2 Inspect RHS track tension *PASS*
- 11.3 Inspect tracks for loose/missing bolts *PASS*
- 11.4 Inspect load and carrier rollers for signs of leaks *PASS*

- 11.5 Inspect idlers for signs of leaks PASS
- 11.6 Inspect sprocket segments condition PASS
- 11.7 Inspect track frame for cracks, lose or missing hardware PASS

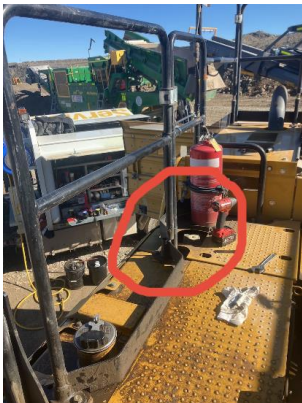
**PM FRAME AND BODY**

- 12.1 Check panels for damage and security PASS



**Image Comment(s):**Left cooler door cracked.

- 12.2 Check access steps and walkway condition FAIL



**Image Comment(s):**Fuel tank handrail broken.



**Image Comment(s):**Right rear handrail loose. Mounting bolts tightened.



**Image Comment(s):**Left rear handrail broken.

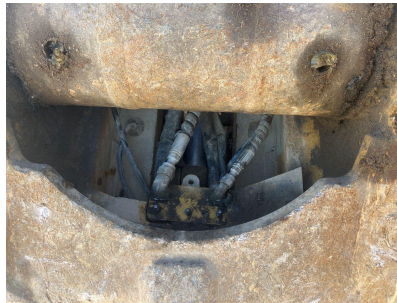
- 12.3 Inspect boom condition – cracks, missing clamps, damaged pipes, excessive movement, lubrication PASS
- 12.4 Inspect stick condition – cracks, missing clamps, damaged pipes, excessive movement, lubrication PASS

● 12.5 Inspect quick hitch condition and operation

FAIL



**Image Comment(s):**Rocks jammed around the coupler cylinder. Rocks removed.



**Image Comment(s):**Coupler protection plate broken.



**Image Comment(s):**Coupler cylinder pin grease nipple broken. Grease nipple replaced.

● 12.6 Inspect bucket condition – cracks, wear, damage, mounts

FAIL



**Image Comment(s):**Bucket cheeks worn.

● 12.7 Inspect GET condition and hardware

PASS

**PM ELECTRICAL SYSTEM**

● 13.1 Check battery condition

PASS

● 13.2 Check battery terminal condition

PASS

● 13.3 Check battery security

PASS

● 13.4 Check battery box drain is clear

PASS

● 13.5 Check wiring condition and security

PASS

## PM GREASE SYSTEM

●	14.1 Check all points for acceptable lubrication	PASS
●	14.2 Inspect grease system operation	N/A
●	14.3 Check grease line condition	PASS
●	14.4 Refill grease tank	N/A
●	14.5 Lubricate bucket linkage	PASS
●	14.6 Lubricate blade linkage	N/A
●	14.7 Lubricate boom & stick linkage	PASS
●	14.8 Lubricate swing bearing	PASS

## PM OPERATOR STATION

●	15.1 Check all doors for correct opening and closing adjustments and operation	PASS
●	15.2 Inspect condition of door seals	PASS
●	15.3 Check window glass and seal condition	PASS
●	15.4 Check mirror condition and adjustments	PASS
●	15.5 Fill window washer reservoir	PASS
●	15.6 Inspect air con vents condition	PASS
●	15.7 Inspect seat belt and mounting hardware	PASS
●	15.8 Inspect seat condition, operation and mounting	PASS



● 15.9 Replace cabin A/C filter PASS

#### OIL SAMPLING

● 16.1 Engine PASS

● 16.2 Hydraulic System PASS

● 16.3 LHS Final Drive PASS

● 16.4 RHS Final Drive PASS

● 16.5 Swing Transmission PASS

● 16.6 Coolant PASS

#### OIL AND FILTERS

● 17.1 Replace engine oil PASS

● 17.2 Replace engine oil filter PASS

● 17.3 Replace primary fuel filter (water separator) element PASS

● 17.4 Replace secondary fuel filter PASS

● 17.5 Replace fuel system third filter N/A

● 17.6 Replace outer air filter PASS

● 17.7 Replace inner air filter PASS

● 17.8 Replace cab filter PASS

● 17.9 Replace A/C filter PASS

●	17.10 Replace hydraulic case drain filter	N/A
●	17.11 Replace hydraulic pilot filter	N/A
●	17.12 Replace hammer filter	N/A
●	17.13 Replace swing transmission oil	PASS
●	17.14 Replace final drive oil	N/A
●	17.15 Replace hydraulic return filter	N/A

#### PM POST SERVICE INSPECTION CHECKS

●	18.1 All inspections have been completed and rectified as required	PASS
●	18.2 All safety related defects have been repaired or reported	PASS
●	18.3 All defects have been noted and reported	PASS
●	18.4 All fluids are at correct level and drain plugs tight	PASS
●	18.5 All oil samples have visually been inspected and any notable signs of contamination have been reported	PASS
●	18.6 All replaced filters have been cut and inspected and photos added to CAT Inspect and reported to supervisor	PASS
●	18.7 Machine has been recommissioned and ready for operation	PASS
●	18.8 PM service notification marked off in Vision Link	COMPLETED

#### DEFECTS IDENTIFIED

●	19.1 DEFECTS IDENTIFIED	PASS
---	-------------------------	------