

FITFLEET-EXCAVATOR-250HR-CVA

PM Checklist

● 5 ● 0 ● 92 ● 7

Inspection Number	18358664	Customer No	2969824372
Serial Number	YBN00181	Customer Name	AUSTRALIAN HAMMER SUPPLIES HIRE PTY LTD
Make	CATERPILLAR	Customer Email	hirebookings2@hammerhire.com.au
Model	336	Work Order	SM30827
Equipment Family	Large Hydraulic Excavator	Completed On	8/08/2024 8:47:39 AM
Asset ID	AHSH159	Inspector	James Wolters
SMU	7352.71 Hours	PDF Generated On	12/08/2024
Location	Panuara, Australia 2800	Coordinates	0, 0, 0
Technician			

General Info & Comments

General info/Comments

Red - PM FRAME AND BODY

- **12.2 Check access steps and walkway condition** *FAIL*

Comments: Handrails broken/ broken mounting bolts.

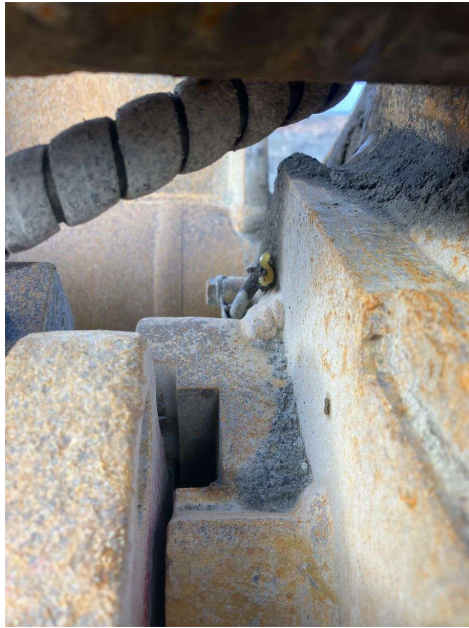
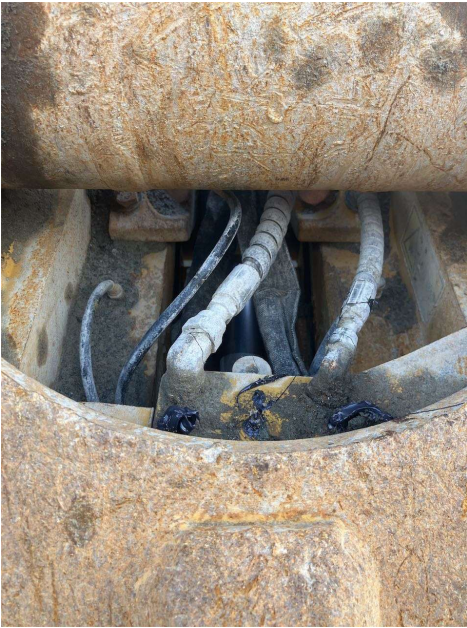




● **12.5 Inspect quick hitch condition and operation**

FAIL

Comments: Coupler cover plate missing.
Coupler grease lines damaged.



● **12.6 Inspect bucket condition – cracks, wear, damage, mounts**

FAIL



Image Comment(s):Bucket worn.

● 12.7 Inspect GET condition and hardware

FAIL



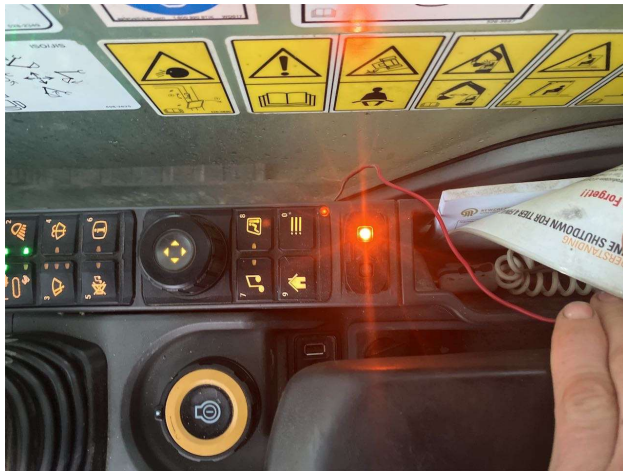
Red - DEFECTS IDENTIFIED

● 18.1 DEFECTS IDENTIFIED

FAIL



Image Comment(s):Rocker switches missing identification covers.



Green - TASK SAFETY INSTRUCTIONS - Revision Number: 02 Date: 25th September 2023

- | | |
|--|------|
| ● 1.1 Wear Correct PPE at all times | PASS |
| ● 1.2 All isolation and safe work procedures must be followed | PASS |
| ● 1.3 Identify task hazards and controls utilising hierarchy or controls model | PASS |
| ● 1.4 Ensure a competent operator and spotter is utilised to move mobile equipment | PASS |
| ● 1.5 Ensure all mobile equipment is fundamentally stable | PASS |
| ● 1.6 Ensure three points of contact is maintained during access and egress | PASS |
| ● 1.7 Ensure acceptable housekeeping standards are maintained at all times | PASS |

Green - MACHINE GENERAL RUNNING CHECKS

- | | |
|---|------|
| ● 2.1 Check all work lights, beacon & reverse alarm for operation | PASS |
| ● 2.2 Test all dash warning lights, gauges and audible alarms for correct operation | PASS |
| ● 2.4 Check operation of all three emergency stop buttons | PASS |
| ● 2.5 Check operation of horn | PASS |
| ● 2.6 Check operation of reverse camera | PASS |
| ● 2.7 Check alternator charge voltage - ACTUAL _____ V | PASS |
| Comments: 27 volts | |
| ● 2.9 Check fire system control panel for 'Normal' | PASS |
| ● 2.10 Test hydraulic lock out function operation | PASS |
| ● 2.11 Check window wiper and washer operation | PASS |

Green - PM SAFETY GENERAL INSPECTION

- | | |
|--|------|
| ● 3.1 Visually ensure all guards, shields and covers are in place and in good condition to ensure personal are protected from rotating parts | PASS |
| ● 3.2 Check condition of machine identification signage | PASS |
| ● 3.3 Inspect ROPS/FOPS condition | PASS |

Green - PM BRAKING SYSTEM

- | | |
|---|------|
| ● 4.1 Test travel brakes – Ensure the machine comes to a stop when travel controls are released | PASS |
| ● 4.2 Test travel brakes – Ensure the brakes hold on a suitable slope | PASS |

Green - PM FIRE SUPPRESSION SYSTEM

●	5.1 Ensure fire suppression bottle and components are securely mounted and in good condition	PASS
●	5.2 Ensure fire suppression is correctly charged	PASS
●	5.3 Inspect last charge date - ACTUAL _____	PASS
Comments: March 2024		
●	5.4 Check all fire extinguishers are securely mounted and in good condition	PASS
●	5.5 Check all fire extinguishers are correctly charged	PASS
●	5.6 Inspect last charge date - ACTUAL _____	PASS
Comments: March 2024		
Green - PM ENGINE		
●	6.2 Inspect air intake system hoses, pipes, clamps for signs of dirt ingress	PASS
●	6.3 Inspect engine for oil or fuel leaks	PASS
●	6.4 Inspect engine components for missing clamps	PASS
●	6.5 Inspect exhaust system for signs of leaks, loose bolts or missing clamps	PASS
●	6.6 Inspect turbo for security and signs of leaks	PASS
●	6.7 Inspect condition of exhaust lagging	PASS
●	6.8 Inspect engine mounts for condition and loose hardware	PASS
●	6.9 Inspect alternator mount condition and adjustment	PASS
●	6.10 Inspect wiring condition and security	PASS
●	6.11 Inspect engine belts	PASS

Green - PM ENGINE COOLING SYSTEM

- | | |
|--|------|
| ● 7.1 Check coolant level | PASS |
| ● 7.2 Check condition of radiator cap | PASS |
| ● 7.3 Check condition of radiator core | PASS |
| ● 7.4 Check cooling system for signs of leaks | PASS |
| ● 7.5 Check hose and clamp condition | PASS |
| ● 7.6 Inspect fan condition and operation | PASS |
| ● 7.7 Inspect radiator and fan guard condition | PASS |

Green - PM SWING TRANSMISSION

- | | |
|---|------|
| ● 8.1 Inspect swing transmission for signs of leaks | PASS |
| ● 8.2 Inspect swing transmission oil level | PASS |

Green - PM HYDRAULIC SYSTEM

- | | |
|---|------|
| ● 9.1 Check hydraulic oil level | PASS |
| ● 9.2 Inspect hydraulic cylinders for leaks and security | PASS |
| ● 9.3 Inspect hydraulic hoses for leaks, damage, security | PASS |
| ● 9.4 Inspect hydraulic pump condition, leaks, security | PASS |
| ● 9.5 Check Pilot Accumulator operation as per OEM Maintenance Procedure - Test Boom Down Functionality with engine off | PASS |

Green - PM FINAL DRIVES

- | | |
|---|------|
| ● 10.1 Inspect LHS final drive mount condition for leaks and security | PASS |
|---|------|

●	10.2 Inspect LHS oil level and mag plug condition	PASS
●	10.3 Inspect RHS final drive mount condition for leaks and security	PASS
●	10.4 Inspect RHS oil level and mag plug condition	PASS
Green - PM UNDERCARRIAGE		
●	11.1 Inspect LHS track tension	PASS
●	11.2 Inspect RHS track tension	PASS
●	11.3 Inspect tracks for loose/missing bolts	PASS
●	11.4 Inspect load and carrier rollers for signs of leaks	PASS
●	11.5 Inspect idlers for signs of leaks	PASS
●	11.6 Inspect sprocket segments condition	PASS
●	11.7 Inspect track frame for cracks, lose or missing hardware	PASS
Green - PM FRAME AND BODY		
●	12.1 Check panels for damage and security	PASS
●	12.3 Inspect boom condition – cracks, missing clamps, damaged pipes, excessive movement, lubrication	PASS
●	12.4 Inspect stick condition – cracks, missing clamps, damaged pipes, excessive movement, lubrication	PASS
Green - PM ELECTRICAL SYSTEM		
●	13.1 Check battery condition	PASS
●	13.2 Check battery terminal condition	PASS

-
- 13.3 Check battery security *PASS*
-
- 13.4 Check battery box drain is clear *PASS*
-
- 13.5 Check wiring condition and security *PASS*
-

Green - PM GREASE SYSTEM

- 14.1 Check all points for acceptable lubrication *PASS*
-
- 14.3 Check grease line condition *PASS*
-
- 14.5 Lubricate bucket linkage *PASS*
-
- 14.7 Lubricate boom & stick linkage *PASS*
-
- 14.8 Lubricate swing bearing *PASS*
-

Green - PM OPERATOR STATION

- 15.1 Check all doors for correct opening and closing adjustments and operation *PASS*
-
- 15.2 Inspect condition of door seals *PASS*
-
- 15.3 Check window glass and seal condition *PASS*
-
- 15.4 Check mirror condition and adjustments *PASS*
-
- 15.5 Fill window washer reservoir *PASS*
-
- 15.6 Inspect air con vents condition *PASS*
-
- 15.7 Inspect seat belt and mounting hardware *PASS*
-
- 15.8 Inspect seat condition, operation and mounting *PASS*
-

Green - OIL SAMPLING

● 16.1 Engine PASS

Green - PM POST SERVICE INSPECTION CHECKS

● 17.1 All inspections have been completed and rectified as required PASS

● 17.2 All safety related defects have been repaired or reported PASS

● 17.3 All defects have been noted and reported PASS

● 17.4 All fluids are at correct level and drain plugs tight PASS

● 17.5 All oil samples have visually been inspected and any notable signs of contamination have been reported PASS

● 17.6 All replaced filters have been cut and inspected and photos added to CAT Inspect and reported to supervisor PASS

● 17.7 Machine has been recommissioned and ready for operation PASS

● 17.8 PM service notification marked off in Vision Link COMPLETED

Grey - MACHINE GENERAL RUNNING CHECKS

● 2.3 Check idle timer for correct shut down operation N/A

● 2.8 Check operation of auto grease system by manually activating timer N/A

Grey - PM ENGINE

● 6.1 Perform engine valve set N/A

Grey - PM GREASE SYSTEM

● 14.2 Inspect grease system operation N/A

● 14.4 Refill grease tank N/A

● 14.6 Lubricate blade linkage N/A

Grey - PM OPERATOR STATION

● 15.9 Replace cabin A/C filter N/A
