

FITFLEET-EXCAVATOR-500HR-CVA

PM Checklist

● 5 ● 0 ● 99 ● 15

Inspection Number	18666350	Customer No	2969824372
Serial Number	YBN00181	Customer Name	AUSTRALIAN HAMMER SUPPLIES HIRE PTY LTD
Make	CATERPILLAR	Customer Email	hirebookings2@hammerhire.com.au
Model	336	Work Order	SM31044
Equipment Family	Large Hydraulic Excavator	Completed On	20/08/2024 6:46:09 PM
Asset ID	AHSH159	Inspector	James Wolters
SMU	7493.55 Hours	PDF Generated On	20/08/2024
Location	Panuara, Australia 2800	Coordinates	0, 0, 0
Technician			

General Info & Comments

● **General info/Comments** NORMAL



Image Comment(s): Engine oil topped up. 5Ltrs

TASK SAFETY INSTRUCTIONS - Revision Number: 02 Date: 25th September 2023

- **1.1 Wear Correct PPE at all times** PASS

- **1.2 All isolation and safe work procedures must be followed** PASS

- **1.3 Identify task hazards and controls utilising hierarchy or controls model** PASS

- **1.4 Ensure a competent operator and spotter is utilised to move mobile equipment** PASS

- **1.5 Ensure all mobile equipment is fundamentally stable** PASS

- 1.6 Ensure three points of contact is maintained during access and egress PASS
- 1.7 Ensure acceptable housekeeping standards are maintained at all times PASS

MACHINE GENERAL RUNNING CHECKS

- 2.1 Check all work lights, beacon & reverse alarm for operation PASS
- 2.2 Test all dash warning lights, gauges and audible alarms for correct operation PASS
- 2.3 Check idle timer for correct shut down operation N/A
- 2.4 Check operation of all three emergency stop buttons PASS
- 2.5 Check operation of horn PASS
- 2.6 Check operation of reverse camera PASS
- 2.7 Check alternator charge voltage - ACTUAL _____ V PASS

Comments: 27 volts
- 2.8 Check operation of auto grease system by manually activating timer N/A
- 2.9 Check fire system control panel for 'Normal' PASS
- 2.10 Test hydraulic lock out function operation PASS
- 2.11 Check window wiper and washer operation PASS

PM SAFETY GENERAL INSPECTION

- 3.1 Visually ensure all guards, shields and covers are in place and in good condition to ensure personal are protected from rotating parts PASS
- 3.2 Check condition of machine identification signage PASS

● 3.3 Inspect ROPS/FOPS condition PASS

PM BRAKING SYSTEM

● 4.1 Test travel brakes – Ensure the machine comes to a stop when travel controls are released PASS

● 4.2 Test travel brakes – Ensure the brakes hold on a suitable slope PASS

PM FIRE SUPPRESSION SYSTEM

● 5.1 Ensure fire suppression bottle and components are securely mounted and in good condition PASS

● 5.2 Ensure fire suppression is correctly charged PASS

● 5.3 Inspect last charge date - ACTUAL _____ PASS

Comments: March 24

● 5.4 Check all fire extinguishers are securely mounted and in good condition PASS

● 5.5 Check all fire extinguishers are correctly charged PASS

● 5.6 Inspect last charge date - ACTUAL _____ PASS

Comments: March 24

PM ENGINE

● 6.1 Perform engine valve set PASS

● 6.2 Inspect air intake system hoses, pipes, clamps for signs of dirt ingress PASS

● 6.3 Inspect engine for oil or fuel leaks PASS

● 6.4 Inspect engine components for missing clamps PASS

● 6.5 Inspect exhaust system for signs of leaks, loose bolts or missing clamps PASS

- 6.6 Inspect turbo for security and signs of leaks PASS

- 6.7 Inspect condition of exhaust lagging PASS

- 6.8 Inspect engine mounts for condition and loose hardware PASS

- 6.9 Inspect alternator mount condition and adjustment PASS

- 6.10 Inspect wiring condition and security PASS

- 6.11 Clean engine breather PASS

- 6.12 Replace outer air filter PASS

- 6.13 Inspect & adjust engine belts PASS

PM ENGINE COOLING SYSTEM

- 7.1 Check coolant level PASS

- 7.2 Check condition of radiator cap PASS

- 7.3 Check condition of radiator core and blow out PASS

- 7.4 Check cooling system for signs of leaks PASS

- 7.5 Check hose and clamp condition PASS

- 7.6 Inspect fan condition and operation PASS

- 7.7 Inspect radiator and fan guard condition PASS

PM SWING TRANSMISSION

- 8.1 Inspect swing transmission for signs of leaks PASS

● 8.2 Inspect swing transmission oil level PASS

PM HYDRAULIC SYSTEM

● 9.1 Check hydraulic oil level PASS

● 9.2 Inspect hydraulic cylinders for leaks and security PASS

● 9.3 Inspect hydraulic hoses for leaks, damage, security PASS

● 9.4 Inspect hydraulic pump condition, leaks, security PASS

● 9.5 Check Pilot Accumulator operation as per OEM Maintenance Procedure -
Test Boom Down Functionality with engine off PASS

PM FINAL DRIVES

● 10.1 Inspect LHS final drive mount condition for leaks and security PASS

● 10.2 Inspect LHS oil level and mag plug condition PASS

10.3 Inspect RHS final drive mount condition for leaks and security

10.4 Inspect RHS oil level and mag plug condition

PM UNDERCARRIAGE

● 11.1 Inspect LHS track tension PASS

● 11.2 Inspect RHS track tension PASS

● 11.3 Inspect tracks for loose/missing bolts PASS

● 11.4 Inspect load and carrier rollers for signs of leaks PASS

● 11.5 Inspect idlers for signs of leaks PASS

● 11.6 Inspect sprocket segments condition PASS

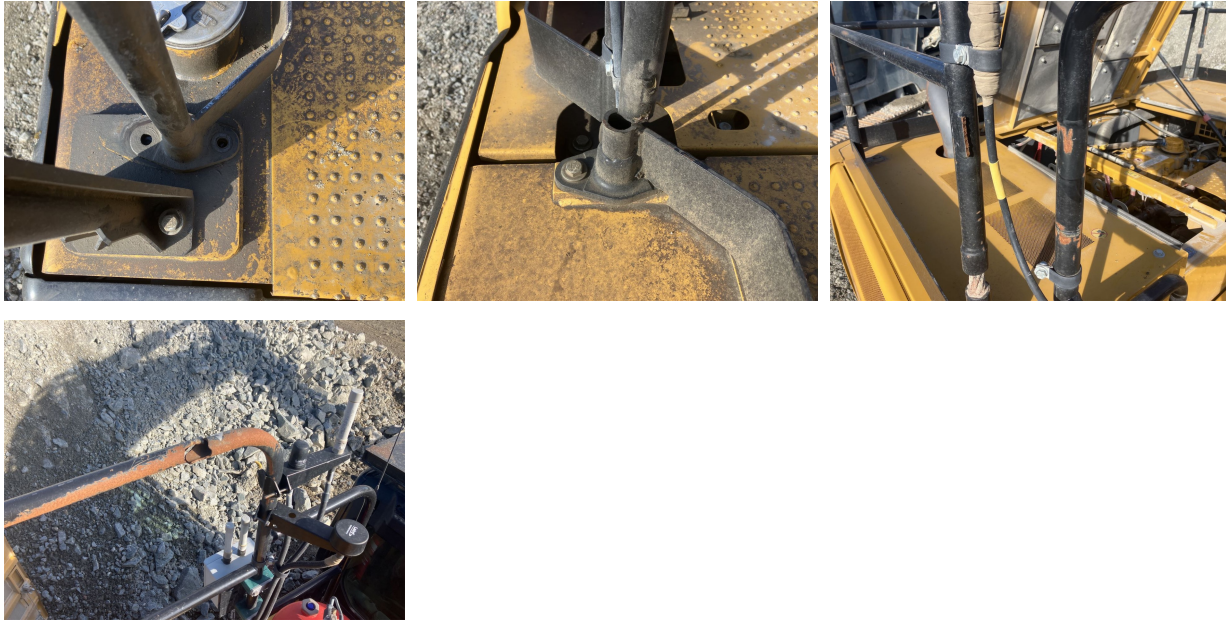
● 11.7 Inspect track frame for cracks, lose or missing hardware PASS

PM FRAME AND BODY

● 12.1 Check panels for damage and security PASS

● 12.2 Check access steps and walkway condition FAIL

Comments: Handrails damaged.



● 12.3 Inspect boom condition – cracks, missing clamps, damaged pipes, excessive movement, lubrication PASS

● 12.4 Inspect stick condition – cracks, missing clamps, damaged pipes, excessive movement, lubrication PASS

● 12.5 Inspect quick hitch condition and operation FAIL



Image Comment(s): Coupler cover missing. Grease lines damaged.

● 12.6 Inspect bucket condition – cracks, wear, damage, mounts

FAIL



Image Comment(s):Bucket worn.

● 12.7 Inspect GET condition and hardware

FAIL



Image Comment(s):No GET

PM ELECTRICAL SYSTEM

● 13.1 Check battery condition

PASS

● 13.2 Check battery terminal condition

PASS

● 13.3 Check battery security

PASS

● 13.4 Check battery box drain is clear

PASS

● 13.5 Check wiring condition and security

PASS

PM GREASE SYSTEM

● 14.1 Check all points for acceptable lubrication

PASS

● 14.2 Inspect grease system operation

N/A

● 14.3 Check grease line condition

PASS

●	14.4 Refill grease tank	N/A
●	14.5 Lubricate bucket linkage	PASS
●	14.6 Lubricate blade linkage	N/A
●	14.7 Lubricate boom & stick linkage	PASS
●	14.8 Lubricate swing bearing	PASS

PM OPERATOR STATION

●	15.1 Check all doors for correct opening and closing adjustments and operation	PASS
●	15.2 Inspect condition of door seals	PASS
●	15.3 Check window glass and seal condition	PASS
●	15.4 Check mirror condition and adjustments	PASS
●	15.5 Fill window washer reservoir	PASS
●	15.6 Inspect air con vents condition	PASS
●	15.7 Inspect seat belt and mounting hardware	PASS
●	15.8 Inspect seat condition, operation and mounting	PASS
●	15.9 Replace cabin A/C filter	N/A

OIL SAMPLING

●	16.1 Engine	PASS
●	16.2 Hydraulic System	PASS

●	16.3 LHS Final Drive	PASS
●	16.4 RHS Final Drive	PASS
●	16.5 Swing Transmission	PASS
●	16.6 Coolant	PASS

OIL AND FILTERS

●	17.1 Replace engine oil	N/A
●	17.2 Replace engine oil filter	N/A
●	17.3 Replace primary fuel filter (water separator) element	N/A
●	17.4 Replace secondary fuel filter	N/A
●	17.5 Replace fuel system third filter	N/A
●	17.6 Replace outer air filter	PASS
●	17.7 Replace cab filter	N/A
●	17.8 Replace A/C filter	N/A
●	17.9 Replace hydraulic case drain filter	N/A
●	17.10 Replace hydraulic pilot filter	N/A

PM POST SERVICE INSPECTION CHECKS

●	18.1 All inspections have been completed and rectified as required	PASS
●	18.2 All safety related defects have been repaired or reported	PASS

● 18.3 All defects have been noted and reported PASS

● 18.4 All fluids are at correct level and drain plugs tight PASS

● 18.5 All oil samples have visually been inspected and any notable signs of contamination have been reported PASS

● 18.6 All replaced filters have been cut and inspected and photos added to CAT Inspect and reported to supervisor PASS

● 18.7 Machine has been recommissioned and ready for operation PASS

18.8 PM service notification marked off in Vision Link

DEFECTS IDENTIFIED

● 19.1 DEFECTS IDENTIFIED FAIL

Comments: Switches in cab missing covers.

