

Major Service

RP042361

Customer AUSTRALIAN HAMMER SUPPLIES HIRE Resource Reid Lewis
 Contact

Address Australian Hammer Supplies Hire Pty Ltd Job Type Major Service
 32 Williamson Road Reference
 Ingleburn Date 2024-07-30 09:28 - 09:32
 NSW 2565 Job duration 4:0:00
 Driving duration 00:00:00
 Distance travelled 0 km

Notes 500HR SERVICE

Customer/Technician

Resource notes



Major Service		
	Answer	Notes
Additional notes	no	
Additional notes	none	
Change engine oil (litres used)	12	
Change fuel filter	yes	
Change fuel filter	yes	
Change gear oil (litres used)	8	
Change gear oil (litres used)	8	
Change hydraulic oil (litres used)	0	
Change hydraulic pilot filter	yes	
Change hydraulic return filter	yes	
Change hydraulic suction filter	no	

Change inner air filter	yes
Change oil filter	yes
Change oil filter	yes
Change outer air filter	yes
Change outer air filter	yes
Check hand controls operational	Yes
Check slew (full travel and smooth operation)	Yes
Check the hydraulic motor and the control block for oil leaks.	Yes
Does the Hitch need Shimming?	no
Foot pedals (operate correctly)	Yes
Gauges (operate correctly)	Yes
General check/adjust driver belts	Yes
General inspections/safety checks	good
General inspections/safety checks	good
General inspections/safety checks	good
Grease & Lubricate Pins & bushes	Yes
Grease all nipples	y
Grease all nipples	yes
Hand controls (operate correctly)	Yes
Handbrake (functional)	na
Inspect track tension	good
Inspect track tension	good
Inspect/top up coolant (litres used)	0
Inspect/top up coolant (litres used)	0
Meter Reading	702
Operational inspection controls and safety locks Air conditioner/heater	Yes
Operational inspection controls and safety locks Attachment controls	Yes
Operational inspection controls and safety locks Battery charger rate	Yes
Operational inspection controls and safety locks Engine shut off	Yes
Operational inspection controls and safety locks Engine speed high	Yes

Operational inspection controls and safety locks Engine speed low idle	Yes
Operational inspection controls and safety locks E- STOPS	Yes
Operational inspection controls and safety locks Flow test hyd system(Ref. WSM)	Yes
Operational inspection controls and safety locks Horn hazard & warning devices	Yes
Operational inspection controls and safety locks Hour & tachometer	Yes
Operational inspection controls and safety locks Hydraulic auxiliary operation	Yes
Operational inspection controls and safety locks Instruments & Gauges	Yes
Operational inspection controls and safety locks Lights - Interior	Yes
Operational inspection controls and safety locks- Lights head,signal, stop & work	Yes
Operational inspection controls and safety locks Lights-warning	Yes
Operational inspection controls and safety locks Main relief pressure check: PSI =	Yes
Operational inspection controls and safety locks No coolant leaks	Yes
Operational inspection controls and safety locks No exhaust leaks	Yes
Operational inspection controls and safety locks No fuel system leaks	Yes
Operational inspection controls and safety locks No oil leaks	Yes
Operational inspection controls and safety locks Quick hitch	Yes
Operational inspection controls and safety locks Safety interlock function	Yes
Operational inspection controls and safety locks Seat belt operation & mounting	Yes
Operational inspection controls and safety locks Set clock & audio system	Yes
Operational inspection controls and safety locks Set service intervals	Yes
Operational inspection controls and safety locks- Switches & controls	Yes
Operational inspection controls and safety locks Verify relief valve setting (attach)	Yes



Australian Hammer Supplies Hire
Unit 3/32 Williamson Road
Ingleburn
NSW 2565

Operational inspection controls and safety locks	Yes
Windscreen wipers & washers	

Pre cleaner, cabin filter and outer air filter take out and blow out - Actioned?	Yes
---	-----

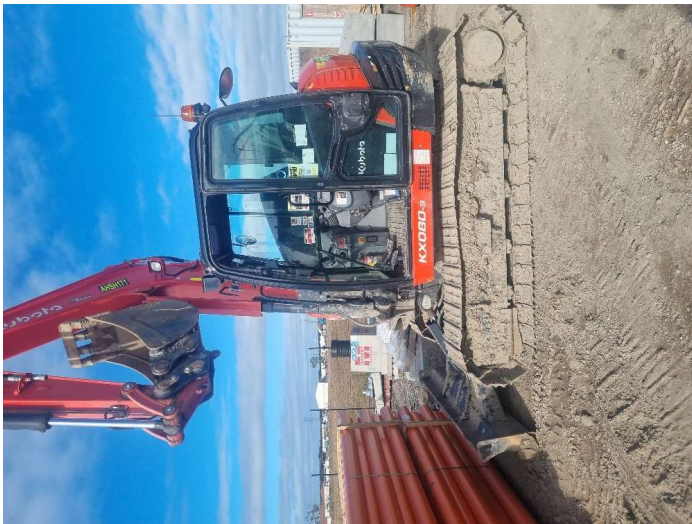
Take hydraulic oil sample	yes
----------------------------------	-----

Tracks check/adjust track tension	Yes
--	-----

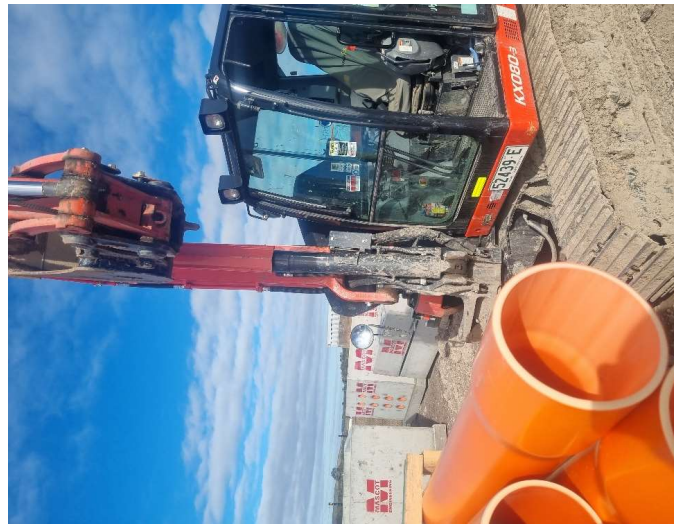
Tyre Condition 1



Tyre Condition 2



Tyre Condition 3



Tyre Condition 4

