



**Australian Hammer Supplies Hire**  
Unit 3/32 Williamson Road  
Ingleburn  
NSW 2565

## Minor Service

**RP046168**

Customer AUSTRALIAN HAMMER SUPPLIES HIRE Resource James McFadden  
Contact

Address AUSTRALIAN HAMMER SUPPLIES HIRE Unit 3/32 WILLIAMSON RD  
INGLEBURN 2565  
Job Type Minor Service  
Reference  
Date 2025-01-08 09:52 - 09:56  
Job duration 2:0:00  
Driving duration 00:00:00  
Distance travelled 0 km

Notes 750HR MINOR SERVICE

Customer/Technician

Resource notes

## Minor Service

**Answer**

**Notes**

Additional notes	none
Change fuel filter	yes
Change gear oil (litres used)	2
Change oil filter	yes
Change outer air filter	yes
Check hand controls operational	Yes
Check slew (full travel and smooth operation)	Yes
Check the hydraulic motor and the control block for oil leaks.	Yes
Foot pedals (operate correctly)	Yes
Gauges (operate correctly)	Yes



**Australian Hammer Supplies Hire**  
Unit 3/32 Williamson Road  
Ingleburn  
NSW 2565

General check/adjust driver belts	Yes
General inspections/safety checks	yes
General inspections/safety checks	yes
Grease & Lubricate Pins & bushes	Yes
Grease all nipples	yes
Hand controls (operate correctly)	Yes
Handbrake (functional)	n/A
Inspect track tension	yes
Inspect/top up coolant (litres used)	0L
Meter Reading	843.4
Operational inspection controls and safety locks Air conditioner/heater	Yes
Operational inspection controls and safety locks Attachment controls	Yes
Operational inspection controls and safety locks Battery charger rate	Yes
Operational inspection controls and safety locks Engine shut off	Yes
Operational inspection controls and safety locks Engine speed high	Yes
Operational inspection controls and safety locks Engine speed low idle	Yes
Operational inspection controls and safety locks E-STOPS	Yes
Operational inspection controls and safety locks Flow test hyd system( Ref. WSM)	Yes
Operational inspection controls and safety locks Horn hazard & warning devices	Yes
Operational inspection controls and safety locks Hour & tachometer	Yes
Operational inspection controls and safety locks Hydraulic auxiliary operation	Yes
Operational inspection controls and safety locks Instruments & Gauges	Yes
Operational inspection controls and safety locks Lights - Interior	Yes
Operational inspection controls and safety locks- Lights head,signal, stop & work	Yes
Operational inspection controls and safety locks Lights-warning	Yes
Operational inspection controls and safety locks	Yes



**Australian Hammer Supplies Hire**  
Unit 3/32 Williamson Road  
Ingleburn  
NSW 2565

Main relief pressure check: PSI =

Operational inspection controls and safety locks No Yes  
coolant leaks

Operational inspection controls and safety locks No Yes  
exhaust leaks

Operational inspection controls and safety locks No Yes  
fuel system leaks

Operational inspection controls and safety locks No Yes  
oil leaks

Operational inspection controls and safety locks Yes  
Quick hitch

Operational inspection controls and safety locks Yes  
Safety interlock function

Operational inspection controls and safety locks Yes  
Seat belt operation & mounting

Operational inspection controls and safety locks Yes  
Set clock & audio system

Operational inspection controls and safety locks Yes  
Set service intervals

Operational inspection controls and safety locks- Yes  
Switches & controls

Operational inspection controls and safety locks Yes  
Verify relief valve setting (attach)

Operational inspection controls and safety locks Yes  
Windscreen wipers & washers

Pre cleaner, cabin filter and outer air filter take out Yes  
and blow out - Actioned?

Tracks check/adjust track tension Yes

Plant No.



Overall View - Right hand side



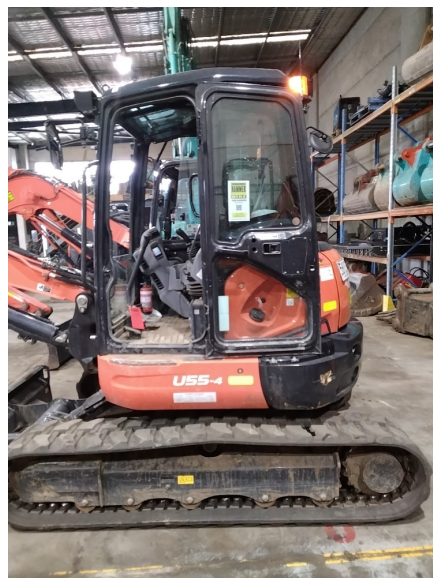
Tyre Condition 2



Tyre Condition 1



Tyre Condition 3



## Tyre Condition 4

