

FITFLEET-EXCAVATOR-500HR-CVA

PM Checklist

● 5 ● 0 ● 97 ● 20

Inspection Number	19858327	Customer No	2969824372
Serial Number	FEK10527	Customer Name	AUSTRALIAN HAMMER SUPPLIES HIRE PTY LTD
Make	CATERPILLAR	Customer Email	michael.patterson@westrac.com.au
Model	330 GC	Work Order	sm
Equipment Family	Medium Hydraulic Excavator	Completed On	8/11/2024 2:13:28 PM
Asset ID	AHSH86	Inspector	Joshua Holland
SMU	4507.67 Hours	PDF Generated On	8/11/2024
Location	Blackmans Flat, Australia 2790	Coordinates	0, 0, 0
Technician	JH		

General Info & Comments

● General info/Comments	<i>ACTION</i>
Comments: Water pump leaking	

TASK SAFETY INSTRUCTIONS - Revision Number: 02 Date: 25th September 2023

● 1.1 Wear Correct PPE at all times	<i>PASS</i>
● 1.2 All isolation and safe work procedures must be followed	<i>PASS</i>
● 1.3 Identify task hazards and controls utilising hierarchy or controls model	<i>PASS</i>
● 1.4 Ensure a competent operator and spotter is utilised to move mobile equipment	<i>PASS</i>
● 1.5 Ensure all mobile equipment is fundamentally stable	<i>PASS</i>
● 1.6 Ensure three points of contact is maintained during access and egress	<i>PASS</i>
● 1.7 Ensure acceptable housekeeping standards are maintained at all times	<i>PASS</i>

MACHINE GENERAL RUNNING CHECKS

- | | | |
|---|---|------|
| ● | 2.1 Check all work lights, beacon & reverse alarm for operation | PASS |
| ● | 2.2 Test all dash warning lights, gauges and audible alarms for correct operation | PASS |
| ● | 2.3 Check idle timer for correct shut down operation | N/A |
| ● | 2.4 Check operation of all three emergency stop buttons | PASS |
| ● | 2.5 Check operation of horn | PASS |
| ● | 2.6 Check operation of reverse camera | PASS |
| ● | 2.7 Check alternator charge voltage - ACTUAL_____V | PASS |
| ● | 2.8 Check operation of auto grease system by manually activating timer | N/A |
| ● | 2.9 Check fire system control panel for 'Normal' | N/A |
| ● | 2.10 Test hydraulic lock out function operation | PASS |
| ● | 2.11 Check window wiper and washer operation | PASS |

PM SAFETY GENERAL INSPECTION

- | | | |
|---|--|------|
| ● | 3.1 Visually ensure all guards, shields and covers are in place and in good condition to ensure personal are protected from rotating parts | FAIL |
|---|--|------|

Comments: Doors bent



● 3.2 Check condition of machine identification signage PASS

● 3.3 Inspect ROPS/FOPS condition PASS

PM BRAKING SYSTEM

● 4.1 Test travel brakes – Ensure the machine comes to a stop when travel controls are released PASS

● 4.2 Test travel brakes – Ensure the brakes hold on a suitable slope PASS

PM FIRE SUPPRESSION SYSTEM

● 5.1 Ensure fire suppression bottle and components are securely mounted and in good condition N/A

● 5.2 Ensure fire suppression is correctly charged N/A

● 5.3 Inspect last charge date - ACTUAL _____ N/A

● 5.4 Check all fire extinguishers are securely mounted and in good condition PASS

● 5.5 Check all fire extinguishers are correctly charged PASS

● 5.6 Inspect last charge date - ACTUAL _____ PASS

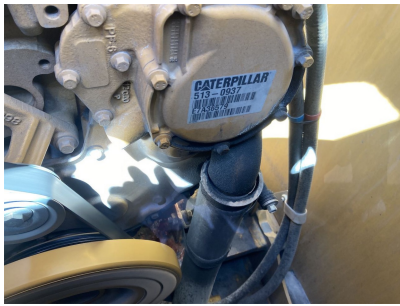
PM ENGINE

● 6.1 Perform engine valve set N/A

● 6.2 Inspect air intake system hoses, pipes, clamps for signs of dirt ingress *PASS*

● 6.3 Inspect engine for oil or fuel leaks *FAIL*

Comments: Water pump leaking



● 6.4 Inspect engine components for missing clamps *PASS*

● 6.5 Inspect exhaust system for signs of leaks, loose bolts or missing clamps *PASS*

● 6.6 Inspect turbo for security and signs of leaks *PASS*

● 6.7 Inspect condition of exhaust lagging *N/A*

● 6.8 Inspect engine mounts for condition and loose hardware *PASS*

● 6.9 Inspect alternator mount condition and adjustment *PASS*

● 6.10 Inspect wiring condition and security *PASS*

● 6.11 Clean engine breather *PASS*

● 6.12 Replace outer air filter *PASS*

● 6.13 Inspect & adjust engine belts *PASS*

PM ENGINE COOLING SYSTEM

● 7.1 Check coolant level *PASS*

● 7.2 Check condition of radiator cap PASS

● 7.3 Check condition of radiator core and blow out PASS

● 7.4 Check cooling system for signs of leaks FAIL

Comments: Water pump leaking

● 7.5 Check hose and clamp condition PASS

● 7.6 Inspect fan condition and operation PASS

● 7.7 Inspect radiator and fan guard condition PASS

PM SWING TRANSMISSION

● 8.1 Inspect swing transmission for signs of leaks PASS

● 8.2 Inspect swing transmission oil level PASS

PM HYDRAULIC SYSTEM

● 9.1 Check hydraulic oil level PASS

● 9.2 Inspect hydraulic cylinders for leaks and security PASS

● 9.3 Inspect hydraulic hoses for leaks, damage, security PASS

● 9.4 Inspect hydraulic pump condition, leaks, security PASS

● 9.5 Check Pilot Accumulator operation as per OEM Maintenance Procedure - Test Boom Down Functionality with engine off PASS

PM FINAL DRIVES

● 10.1 Inspect LHS final drive mount condition for leaks and security PASS

● 10.2 Inspect LHS oil level and mag plug condition PASS

● 10.3 Inspect RHS final drive mount condition for leaks and security *PASS*

● 10.4 Inspect RHS oil level and mag plug condition *PASS*

PM UNDERCARRIAGE

● 11.1 Inspect LHS track tension *PASS*

● 11.2 Inspect RHS track tension *PASS*

● 11.3 Inspect tracks for loose/missing bolts *PASS*

● 11.4 Inspect load and carrier rollers for signs of leaks *PASS*

● 11.5 Inspect idlers for signs of leaks *PASS*

● 11.6 Inspect sprocket segments condition *PASS*

● 11.7 Inspect track frame for cracks, lose or missing hardware *PASS*

PM FRAME AND BODY

● 12.1 Check panels for damage and security *PASS*

● 12.2 Check access steps and walkway condition *PASS*

● 12.3 Inspect boom condition – cracks, missing clamps, damaged pipes, excessive movement, lubrication *PASS*

● 12.4 Inspect stick condition – cracks, missing clamps, damaged pipes, excessive movement, lubrication *PASS*

● 12.5 Inspect quick hitch condition and operation *PASS*

● 12.6 Inspect bucket condition – cracks, wear, damage, mounts *PASS*

● 12.7 Inspect GET condition and hardware *PASS*

PM ELECTRICAL SYSTEM

- | | |
|--|------|
| ● 13.1 Check battery condition | PASS |
| ● 13.2 Check battery terminal condition | PASS |
| ● 13.3 Check battery security | PASS |
| ● 13.4 Check battery box drain is clear | PASS |
| ● 13.5 Check wiring condition and security | PASS |

PM GREASE SYSTEM

- | | |
|--|------|
| ● 14.1 Check all points for acceptable lubrication | PASS |
| ● 14.2 Inspect grease system operation | PASS |
| ● 14.3 Check grease line condition | PASS |
| ● 14.4 Refill grease tank | N/A |
| ● 14.5 Lubricate bucket linkage | PASS |
| ● 14.6 Lubricate blade linkage | N/A |
| ● 14.7 Lubricate boom & stick linkage | PASS |
| ● 14.8 Lubricate swing bearing | PASS |

PM OPERATOR STATION

- | | |
|--|------|
| ● 15.1 Check all doors for correct opening and closing adjustments and operation | PASS |
| ● 15.2 Inspect condition of door seals | PASS |

●	15.3 Check window glass and seal condition	PASS
●	15.4 Check mirror condition and adjustments	PASS
●	15.5 Fill window washer reservoir	PASS
●	15.6 Inspect air con vents condition	PASS
●	15.7 Inspect seat belt and mounting hardware	PASS
●	15.8 Inspect seat condition, operation and mounting	PASS
●	15.9 Replace cabin A/C filter	N/A

OIL SAMPLING

●	16.1 Engine	FAIL
Comments: Water pump leak		
●	16.2 Hydraulic System	PASS
●	16.3 LHS Final Drive	PASS
●	16.4 RHS Final Drive	PASS
●	16.5 Swing Transmission	PASS
●	16.6 Coolant	PASS

OIL AND FILTERS

●	17.1 Replace engine oil	N/A
●	17.2 Replace engine oil filter	N/A
●	17.3 Replace primary fuel filter (water separator) element	N/A

●	17.4 Replace secondary fuel filter	N/A
●	17.5 Replace fuel system third filter	N/A
●	17.6 Replace outer air filter	PASS
●	17.7 Replace cab filter	N/A
●	17.8 Replace A/C filter	N/A
●	17.9 Replace hydraulic case drain filter	N/A
●	17.10 Replace hydraulic pilot filter	N/A

PM POST SERVICE INSPECTION CHECKS

●	18.1 All inspections have been completed and rectified as required	PASS
●	18.2 All safety related defects have been repaired or reported	PASS
●	18.3 All defects have been noted and reported	PASS
●	18.4 All fluids are at correct level and drain plugs tight	PASS
●	18.5 All oil samples have visually been inspected and any notable signs of contamination have been reported	PASS
●	18.6 All replaced filters have been cut and inspected and photos added to CAT Inspect and reported to supervisor	PASS
●	18.7 Machine has been recommissioned and ready for operation	PASS
●	18.8 PM service notification marked off in Vision Link	COMPLETED

DEFECTS IDENTIFIED

●	19.1 DEFECTS IDENTIFIED	PASS
---	-------------------------	------

