

## Repair Excavator

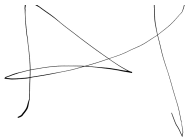
RP047111

Customer AUSTRALIAN HAMMER SUPPLIES HIRE Resource Julio Ribera  
 Contact

Address AUSTRALIAN HAMMER SUPPLIES HIRE Job Type Repair Excavator  
 Unit 3/32 WILLIAMSON RD Reference  
 INGLEBURN Date 2025-02-25 13:59 - 15:51  
 2565 Job duration 1:52:00  
 Driving duration 00:00:00  
 Distance travelled 0 km

Notes 4500HR MAJOR SERVICE

Customer/Technician



Resource notes

N/a

## Repair Excavator

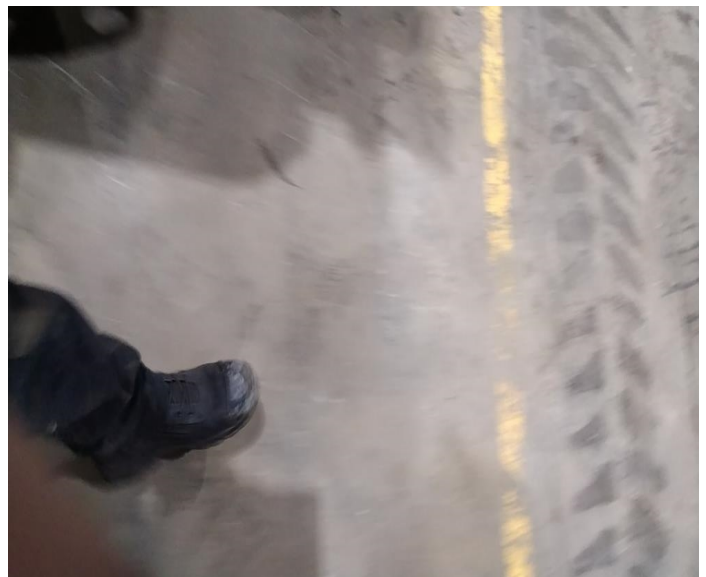
Answer

Notes

Meter Readings

4433

Take a photo of the problem



## Repair Excavator

Answer

Notes

Description of work completed

n/a

Take a photo of the work completed



Additional photo



Additional photo



<b>Repair Excavator</b>		
	<b>Answer</b>	<b>Notes</b>
Have any parts from stock been used?	n/a	
Where did you get the parts from that you used?	n/a	
List any parts you have been provided that you did not use	n/a	
Ready for Hire	YES	
Is this job chargeable?	YES	
Notes if any additional work is required	n/a	
Inspect/top up coolant (litres used)	yes	
Change fuel filter	yes	
Additional notes	n/a	
Change gear oil (litres used)	10.5	
Change outer air filter	yes	
Inspect track tension	yes	
Change oil filter	yes	
Grease all nipples	yes	
General inspections/safety checks	yes	
Meter Reading	4433	
Change hydraulic return filter	yes	
Change inner air filter	yes	
Change hydraulic suction filter	yes	
Change hydraulic pilot filter	yes	
Handbrake (functional)	yes	
Change engine oil (litres used)	29.3	
Take hydraulic oil sample	yss	
Change hydraulic oil (litres used)	7	
Check slew (full travel and smooth operation)	Yes	
Operational inspection controls and safety locks Engine shut off	Yes	
Gauges (operate correctly)	Yes	
Check hand controls operational	Yes	
Operational inspection controls and safety locks Air conditioner/heater	Yes	
Operational inspection controls and safety locks Battery charger rate	Yes	

<b>Repair Excavator</b>		
	<b>Answer</b>	<b>Notes</b>
Foot pedals (operate correctly)	Yes	
Operational inspection controls and safety locks Horn hazard & warning devices	Yes	
Operational inspection controls and safety locks E- STOPS	No	
Operational inspection controls and safety locks Quick hitch	Yes	
Operational inspection controls and safety locks Instruments & Gauges	Yes	
Operational inspection controls and safety locks Engine speed high	Yes	
Operational inspection controls and safety locks Engine speed low idle	Yes	
Operational inspection controls and safety locks Hour & tachometer	Yes	
Operational inspection controls and safety locks No exhaust leaks	Yes	
Operational inspection controls and safety locks Attachment controls	Yes	
Pre cleaner, cabin filter and outer air filter take out and blow out - Actioned?	Yes	
Operational inspection controls and safety locks- Lights head,signal, stop & work	Yes	
Operational inspection controls and safety locks Main relief pressure check: PSI =	Yes	
Operational inspection controls and safety locks No coolant leaks	Yes	
Operational inspection controls and safety locks Flow test hyd system( Ref. WSM)	Yes	
Hand controls (operate correctly)	Yes	
Operational inspection controls and safety locks Hydraulic auxiliary operation	Yes	
Operational inspection controls and safety locks No fuel system leaks	Yes	
Operational inspection controls and safety locks- Switches & controls	Yes	
Grease & Lubricate Pins & bushes	Yes	
Operational inspection controls and safety locks No oil leaks	Yes	
Operational inspection controls and safety locks Lights-warning	Yes	

Repair Excavator		
	Answer	Notes
General check/adjust driver belts	Yes	
Operational inspection controls and safety locks Lights - Interior	Yes	
Operational inspection controls and safety locks Set clock & audio system	Yes	
Operational inspection controls and safety locks Seat belt operation & mounting	Yes	
Operational inspection controls and safety locks Safety interlock function	Yes	
Does the Hitch need Shimming?	no	
Operational inspection controls and safety locks Verify relief valve setting (attach)	Yes	
Operational inspection controls and safety locks Set service intervals	Yes	
Operational inspection controls and safety locks Windscreen wipers & washers	Yes	
Tracks check/adjust track tension	Yes	
Check the hydraulic motor and the control block for oil leaks.	Yes	

**Tyre Condition 2**



Repair Excavator

Answer

Notes

Tyre Condition 4



Tyre Condition 1



Tyre Condition 3

